



Stormwater Monitoring Coalition BMP Regional Monitoring Network Biofilter BMP Performance

SCCWRP Commission

Elizabeth Fassman-Beck, Ph.D.

elizabethfb@sccwrp.org

Sept. 5, 2025





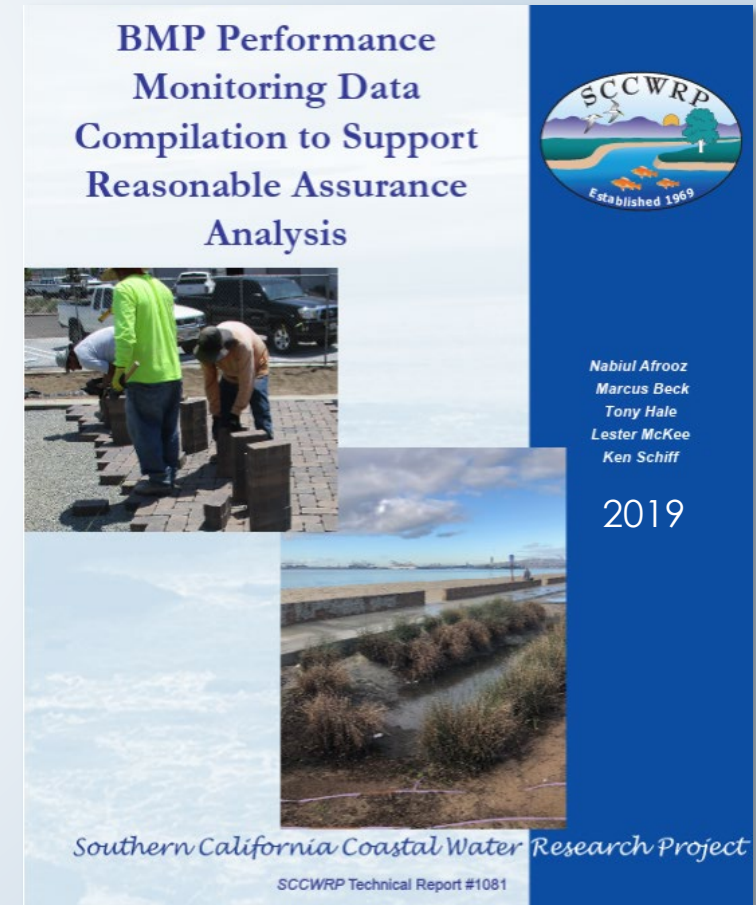
Structural BMPs are big financial investments

- Multi-million dollar investments across SoCal
 - County of Los Angeles ~**\$280M per year** for BMP design, construction, and maintenance
 - South OC ~**\$390M** capital projects across 46 projects + O&M
 - North OC ~**\$20M + \$10.5M** O&M for FY 2024-'25
 - County of San Diego ~**\$15-30M** per year for past 5 yrs; 32 projects in development



We don't know if actual BMP performance aligns with assumptions

- Very little evidence in SoCal documenting effectiveness
- Challenges in consolidating data across one-off studies
- If actual performance differs from assumptions, either
 - Never reach compliance, - or -
 - Over-allocating resources



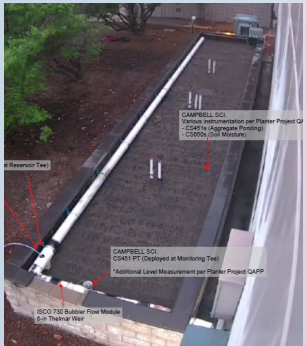
Approach: SMC Regional BMP Monitoring Network



Roadway



**Parking Lot /
Parking Deck**



Roofs



**Mixed
Urban**

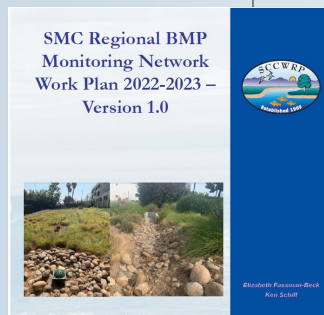
Drainage Area (acres)	# of BMPs
<1	5
1-2	2
3-6	5
11	1



Approach: Coordinated Regional BMP Monitoring through the Stormwater Monitoring Coalition

Establish protocols & procedures

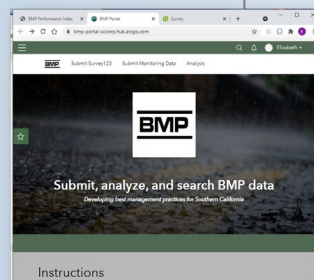
- Instrumentation & sample collection
- Data processing



SCCWRP

Develop & implement information management plan

- Data submission portals
- Analysis tools & dashboards



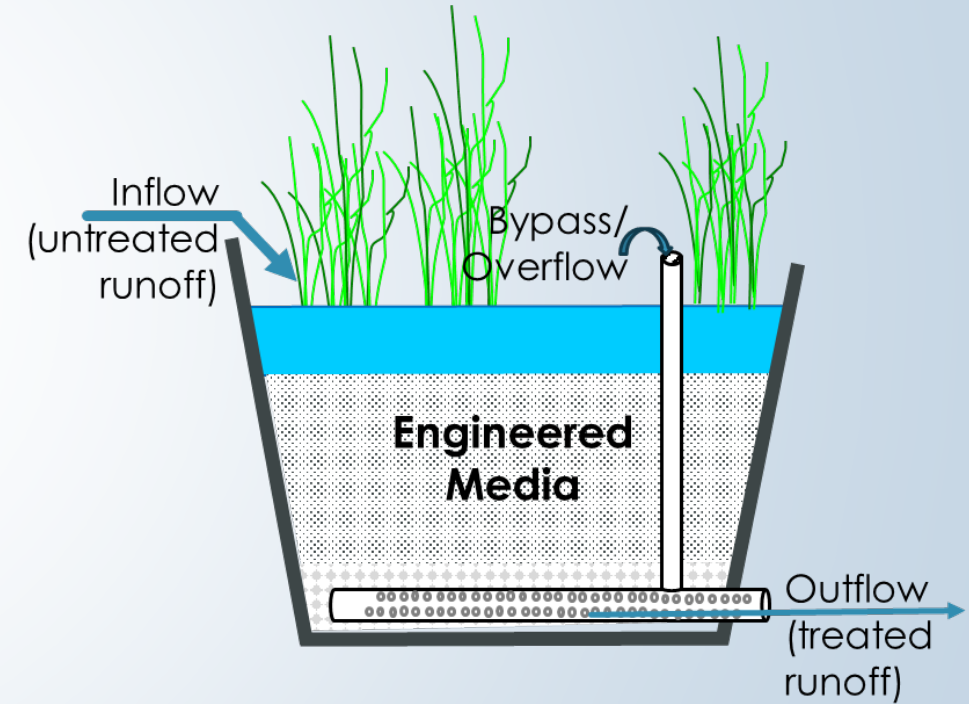
Member Agencies

Storm event monitoring with support from SCCWRP as needed





Initial focus: Partial-capture biofilters





SMC Regional BMP Monitoring Network



**Mass Load
“Reduction” =**

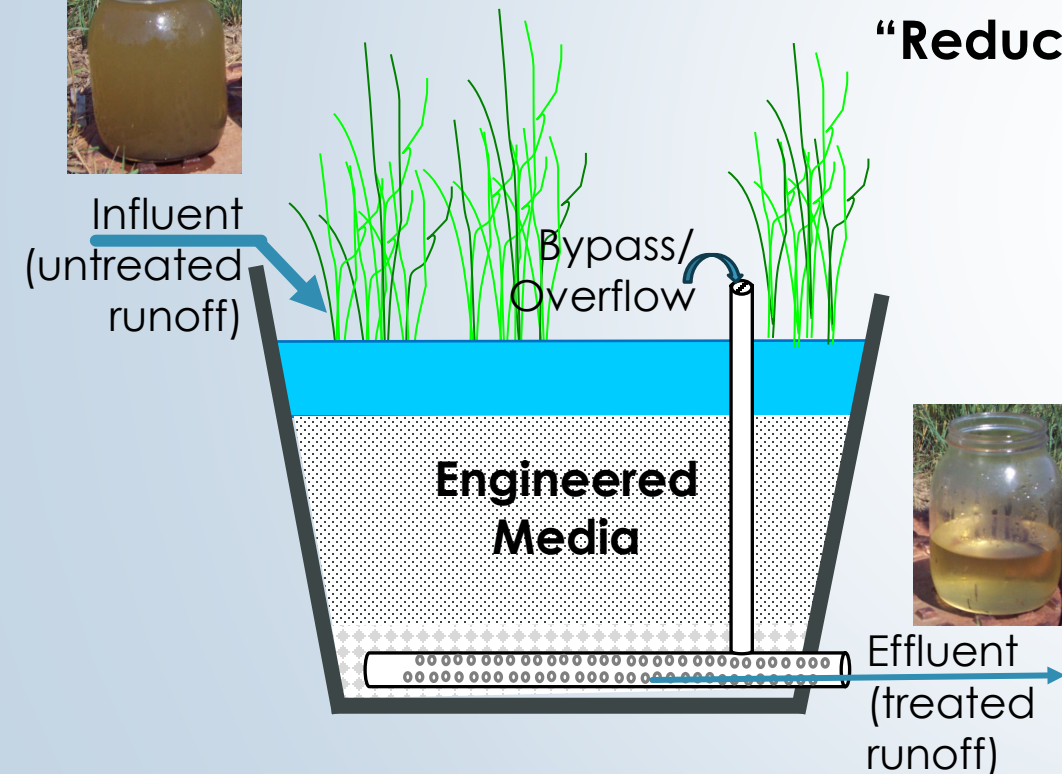
Retention **x**

✓ **Runoff
hydrographs
(flow)**

Treatment

✓ **Event Mean
Concentrations (EMCs)**

- Fecal indicator bacteria
- Nutrients
- Sediment
- Heavy metals
- Microplastics





Partial-capture biofilters are retaining a lot of runoff

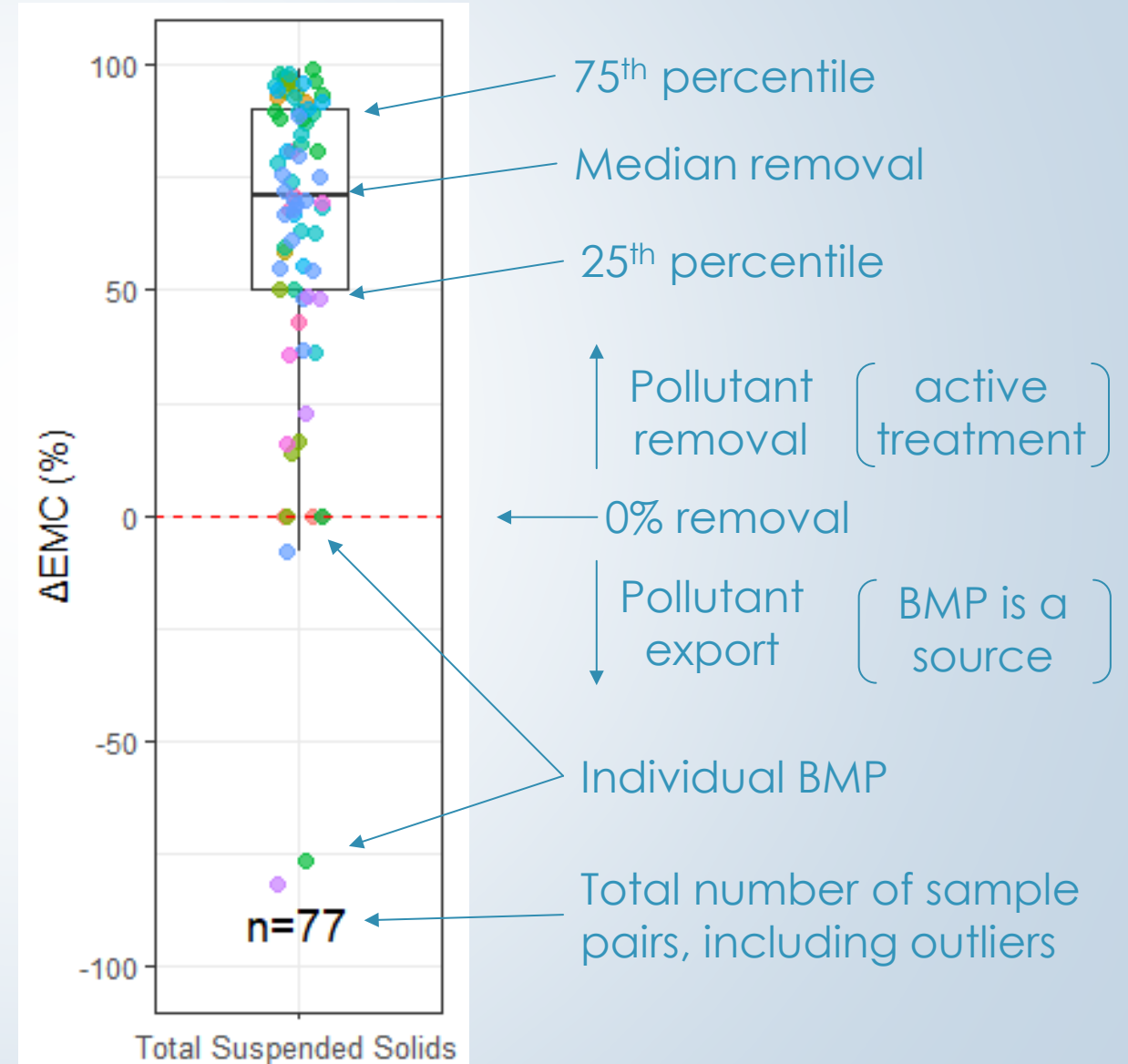
- ▶ BMPs meet or exceed expectations in 74% of all events
 - ▶ 91/123 events
- ▶ There are isolated BMPs that are not capturing runoff as intended.
- ▶ There are a few BMPs capturing much more runoff than anticipated.



Treatment - Results orientation

Characterizing treatment

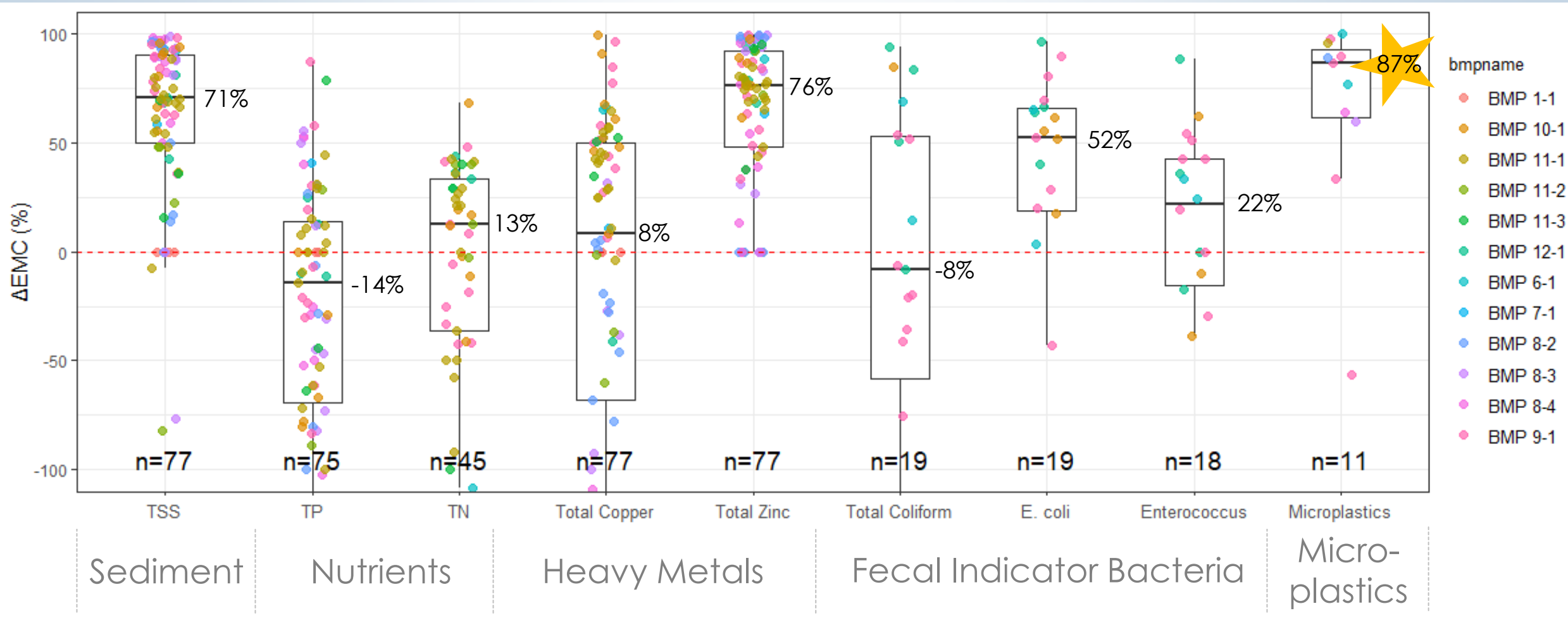
- EMC = event mean concentration
- “typical” → median
- expect variability (long bars)
- statistical outliers omitted from graphs for clarity





Answers to Initial Research Questions

Treatment





Next questions to answer: How do we make biofilters work better?

- Maximize retention & treatment by manipulating engineered media
- Identify appropriate materials' screening/testing procedures
- Incorporate them into design guidance to ensure as-installed BMP meets design expectations



Questions?

Elizabeth Fassman-Beck, Ph.D.
elizabethfb@sccwrp.org

