

## — CONTEXT

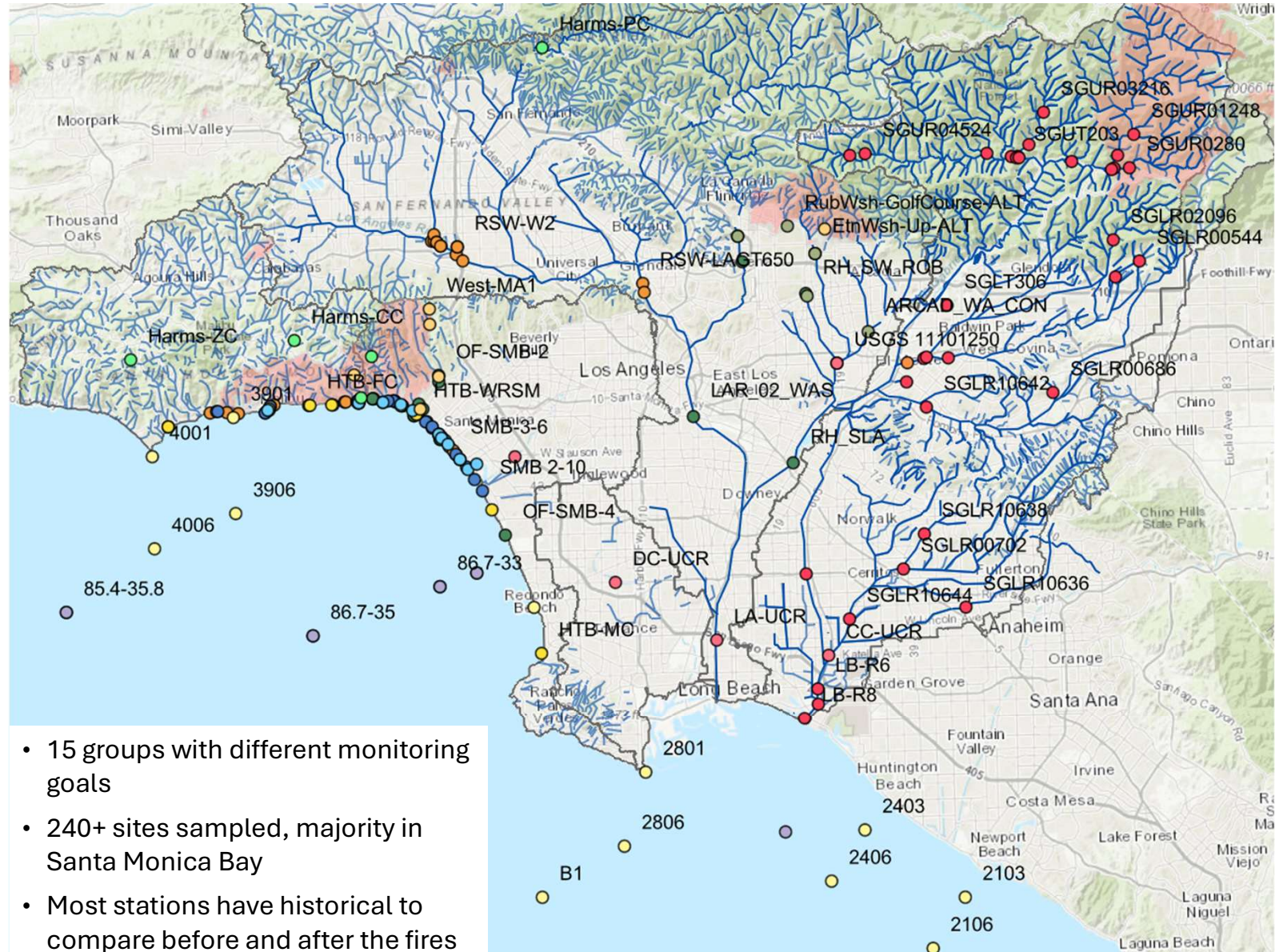
- LA Regional Board is overseeing the assessment of post-fire environmental impacts
  - Part of a larger effort led by the LA County Department of Public Health
- SCCWRP is providing facilitation and technical assistance to develop a monitoring network
- Overall goal is to provide a centralized place where all fire-related water quality data can be accessed

## — APPROACH

- Document all the institutions assessing post-fire impacts in aquatic habitats
  - Produce interactive map of sampling sites and parameters measured
- Identify data gaps and leveraging opportunities
- Develop consensus on sampling and analytical methods to enhance data quality and comparability

### Sampling Agency

- ABCL
- Heal the Bay
- LARWQCB - LACDPH
- LASAN EMD
- LASAN Watershed Protection
- RCDSMM
- SIO
- SIO-NOAA
- Surfrider LA
- UCR - Gray Lab
- UCR-Tamara Harms
- USC-Josh West
- WSP
- Weston



# — DATA GAPS IDENTIFIED

## Environmental impacts of Eaton fire

- ~1/3 of the sites sampled are inland, very few in or near the burned areas
- Watershed groups are discussing the feasibility of adding more sites

## Water quality data

- Fire-related parameters were not consistently measured
- Workgroup prioritized general water chemistry (e.g., suspended solids, alkalinity), heavy metals, nutrients, and PAHs

## Biological data

- Biological monitoring is inconsistent among watersheds

## — NEXT STEPS

- Release the first version of the interactive map with sites location and parameters measured
- Document sampling and analytical methods
- Develop data reporting templates