

**APPENDIX D. WET WEATHER POLLUTOGRAPHS, FIB EXCEEDANCE FREQUENCIES,
CONCENTRATIONS, AND FLUXES BY SITE**

Appendix D-1. Summary of Wet Weather EMC and Day 1-3 Grab Samples For Days Following Storm, with Exceedance Frequencies

Stream	Date of Storm Event	Rainfall (cm)	Antecedent Dry Days	Storm Size	Storm Season	Mean Flow (cms)	Peak Flow (cms)	Pollutographic EMC and Maximum and Single Sample Values for Grab Samples (mpn/100 ml)							
								EC		ENT		TC		FC	
								EMC	Max	EMC	Max	EMC	Max	EMC	Max
CCCP ¹	3/17/2012	1.75	5	Med	Mid	0.097	0.187	4,430.0	29,872	5,150	9,208	28,100	241,960	NA	NA
	3/18/2012	0.00	0	-	-	-	-	1,426.7	-	5,509.0	-	53,225.0	-	-	-
SANT ²	12/13/2012	1.46	9	Lg	Early	0.003	0.017	53.9	209.8	236.2	461.1	3,134.7	6,867.0	3.0	5.0
	12/14/2012	0	0			0.003	0.009	5.5	-	47.3	-	1356.7	-	4.0	-
	12/15/2012	0	1			0.003	0.004	20.0	-	44.2	-	908.2	-	4.0	-
	12/16/2012	0	2			0.003	0.003	57.7	-	74.5	-	823.9	-	43.0	-
	12/17/2012	0	3			0.003	0.003	12.2	-	20.2	-	424.2	-	10.5	-
	2/19 - 2/20/2013	0.58	10	Med	Mid	0.023	0.026	10.0	5.2	4.4	26.5	770.1	112.2	1.2	5.2
	2/21/2013	0	0			0.023	0.023	5.5	-	1.5	-	173.1	-	1.0	-
	2/22/2013	0	1			0.021	0.022	10.0	-	6.3	-	226.5	-	4.5	-
2/23/2013	0	2			0.020	0.021	5.5	-	1.5	-	290.4	-	1.0	-	
SJC ³	3/25 - 3/26/2012	2.67	7	Lg	Mid	0.234	0.305	192.8	488.4	305.3	488.4	2,755.7	15,531.0	N8.5A	NA
	3/27/2012	0	0					116.2	-	329.8	-	1769.7	-	-	-
	3/28/2012	0	1	-	-	-	-	65.1	-	460.4	-	1643.0	-	-	-
	3/29/2012	0	2					63.6	-	140.2	-	983.5	-	-	-
KC ⁴	1/25 - 1/26/2013	1.59	31	Lg	Mid	0.009	0.011	27.2	49.5	119.3	410.6	576.1	1,046.2	8.7	33.0

	1/27/2013	0	0			0.008	0.009	11.0	-	36.4	-	137.6	-	5.5	-
	1/28/2013	0	1	-	-	0.007	0.008	10.3	-	24.0	-	808.8	-	3.0	-
	1/29/2013	0	2			0.006	0.008	4.7	-	13.7	-	362.6	-	1.0	-
LCC ⁵	4/26/2012	1.17	11	Med	Late	0.015	0.017	64.4	113.0	221.7	517.2	1,332.4	393.3	NA	NA
	4/27/2012	0	0			0.013	0.015	21.5	-	101.7	-	894.7	-	-	-
	4/28/2012	0	1	-	-	0.013	0.014	19.8	-	103.5	-	985.6	-	-	-
	4/29/2012	0	2			0.013	0.014	26.7	-	93.4	-	998.7	-	-	-
	1/25 - 1/26/2013	1.73	15	Lg	Mid	0.009	0.011	13.8	45.7	109.0	419.2	308.2	770.1	1.1	2.0
	1/27/2013	0	0			0.008	0.010	10.0	-	41.9	-	179.1	-	1.0	-
	1/28/2013	0	1	-	-	0.007	0.007	5.5	-	15.0	-	291.5	-	1.0	-
	1/29/2013	0	2			0.007	0.007	7.0	-	7.0	-	123.6	-	1.0	-
VRBM1 6	2/26 - 2/27/2014	2.18	7	Lg	Mid			74.3	605.0	128.3	616.0	4,408.6	21,870.0	N/A	N/A
Mean EMC and Max- Day of Storm								62.3		160.6		1,864.1		15.4	62.3
Mean of Grab Days 1, 2, and 3								25.2		84.2		694.6		5.4	25.2
Wet Weather Exceedance Frequency								Count	%	Count	%	Count	%	Count	%
EMC Exceedance Frequency								0/7	0%	6/7	86%	0/7	0.0	0/5	0%
Pollutograph Maximum Exceedance Frequency								2/7	29%	6/7	86%	2/7	29%	0/5	0%
Grab Day Exceedances								0/19	0%	7/19	37%	0/19	0.0	0/13	0%

1CCCP = Cristianitos Creek located in the Lower San Mateo Creek, Orange County, CA. CCCP was excluded from calculations because of positive HF183 human fecal marker hits.

2SANT = Santiago Creek located in the Santiago Canyon Creek Watershed, Orange County, CA.

3SJC = San Juan Creek located in the Upper San Juan Creek Watershed, Orange County, CA

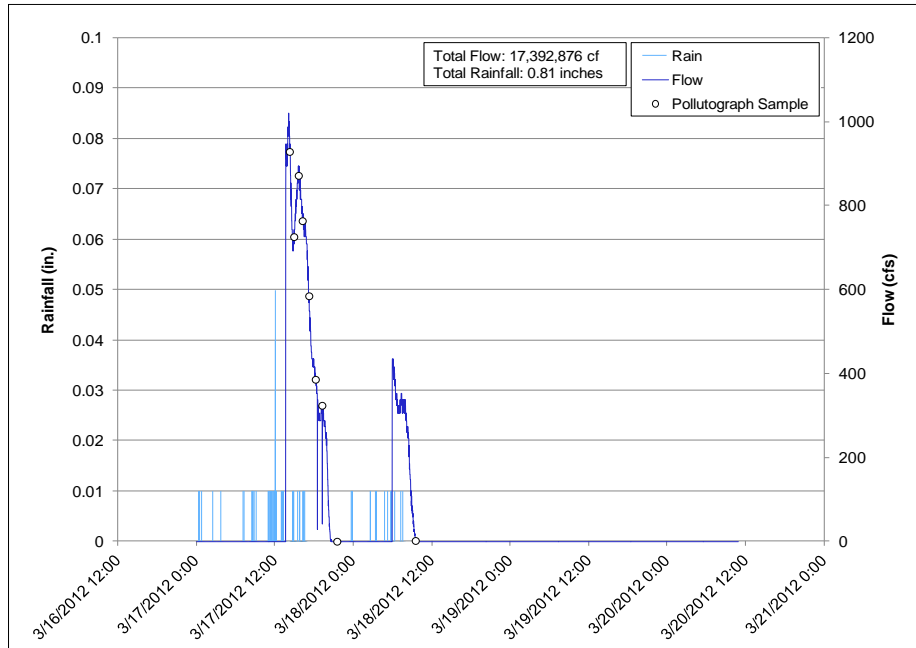
4KC = Kitchen Creek located in the Kitchen Creek-Cottonwood Creek Watershed, San Diego County, CA

5LCC = Long Canyon Creek a tributary to Kitchen Creek in the Kitchen Creek-Cottonwood Creek Watershed, San Diego County, CA

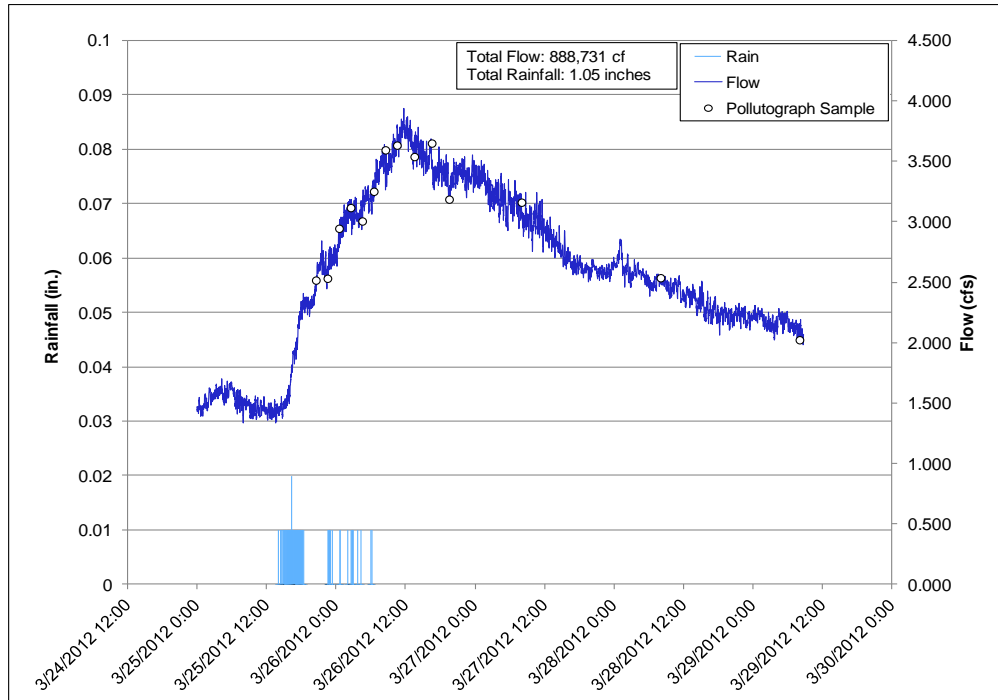
6VRBM1 = North Fork Matilija Creek in the Matilija Creek Watershed, Ventura, CA No Samples were collected on days 2-4 due to another storm coming in.

7VRMT3 = Matilija Creek in the Matilija Creek Watershed, Ventura, CA Rock slide caused sampling to be aborted. Only two bacteria samples met the holding times.

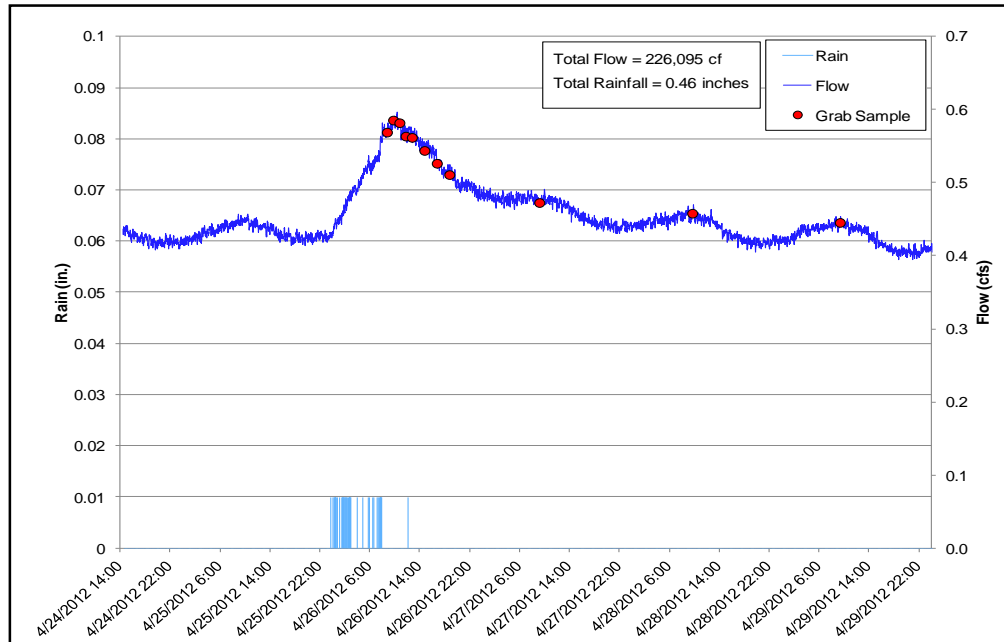
Figure D-2. Storm pollutograph of Cristianitos Creek (CCCP) – wet weather event 1 (March 17–20, 2012) showing rainfall, flow and when samples were collected over time.



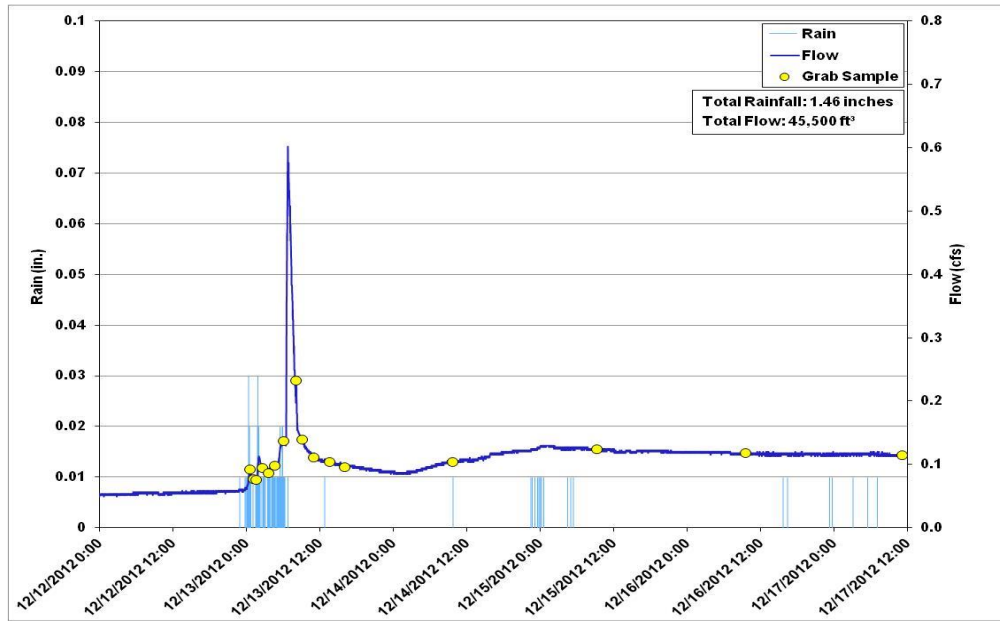
Appendix D-3. Storm pollutograph of San Juan Creek (SJC) – wet weather event 1 (March 25–28, 2012) showing rainfall, flow and when samples were collected over time.



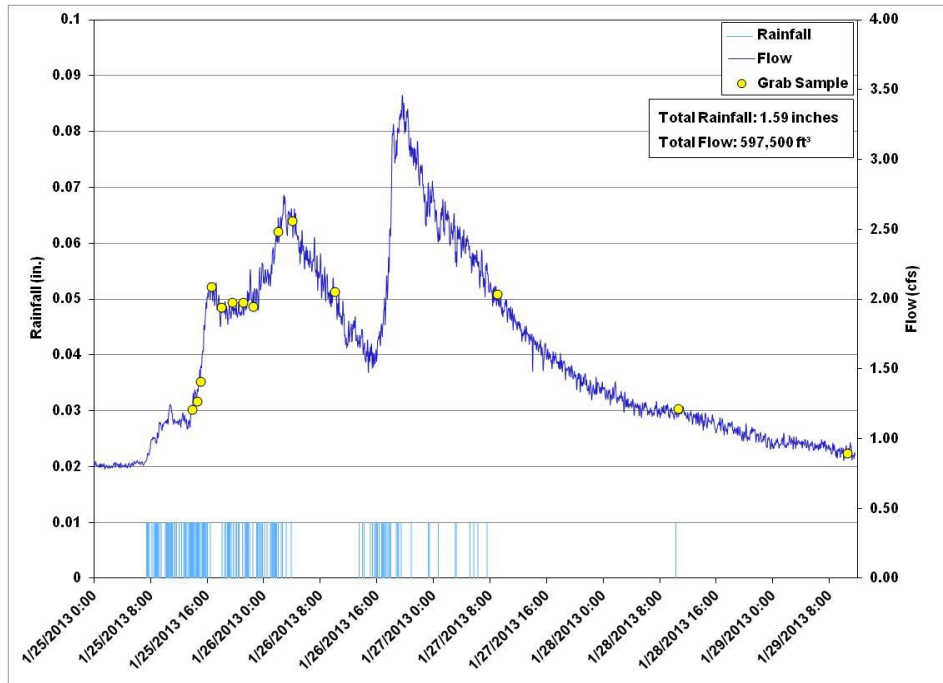
Appendix D-4. Storm pollutograph of Long Canyon Creek (LCC) – wet weather event 1 (April 26–29, 2012) showing rainfall, flow and when samples were collected over time.



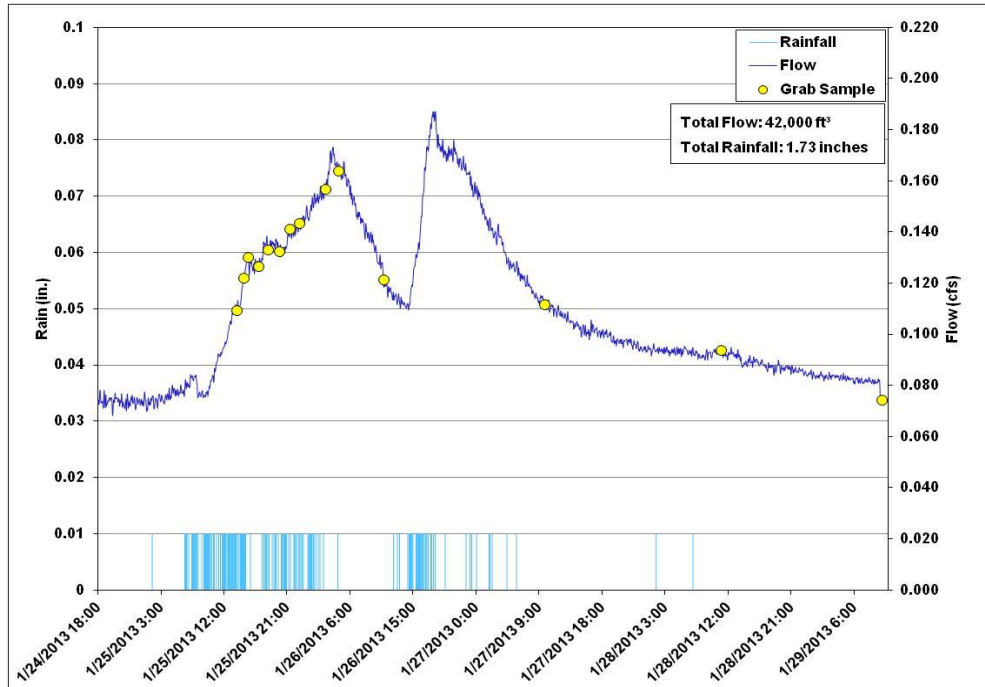
Appendix D-5. Storm pollutograph of Santiago Canyon Creek (SANT) – wet weather event 1 (December 12–17, 2012) showing rainfall, flow and when samples were collected over time.



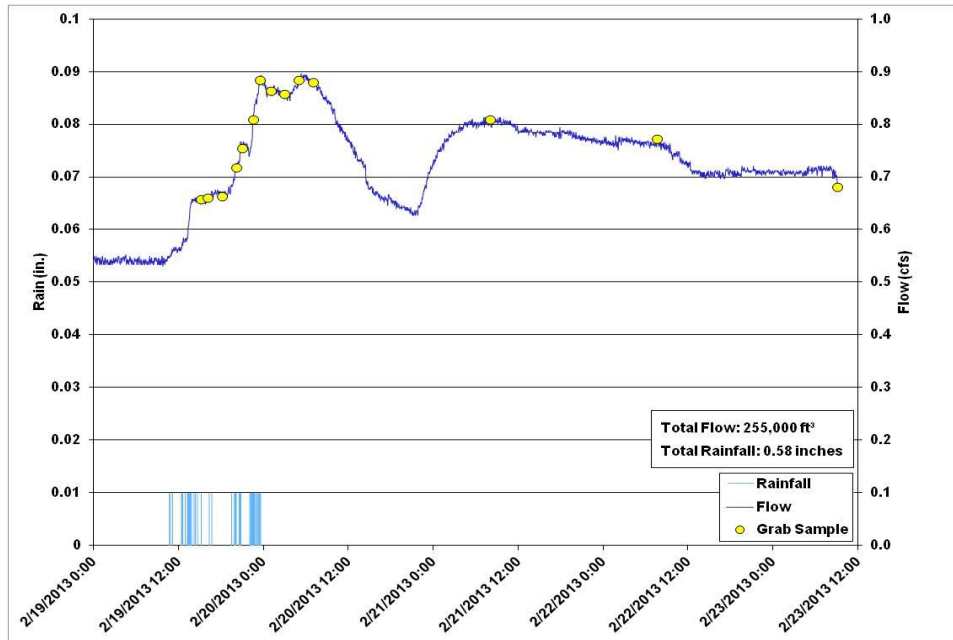
Appendix D-6. Storm pollutograph of Kitchen Creek (KC) – wet weather event 1 (January 25–29, 2013) showing rainfall, flow and when samples were collected over time.



Appendix D-7. Storm pollutograph of Long Canyon Creek (LCC) – wet weather event 2 (January 25–29, 2013) showing rainfall, flow and when samples were collected over time.



Appendix D-8. Storm pollutograph of Santiago Canyon Creek (SANT) – wet weather event 2 (February 19–23, 2013) showing rainfall, flow and when samples were collected over time.



Appendix D-9. Storm pollutograph of Matilija Creek (VRMT3) – wet weather event 1 (February 26–29, 2014) showing rainfall, flow and when samples were collected over time.

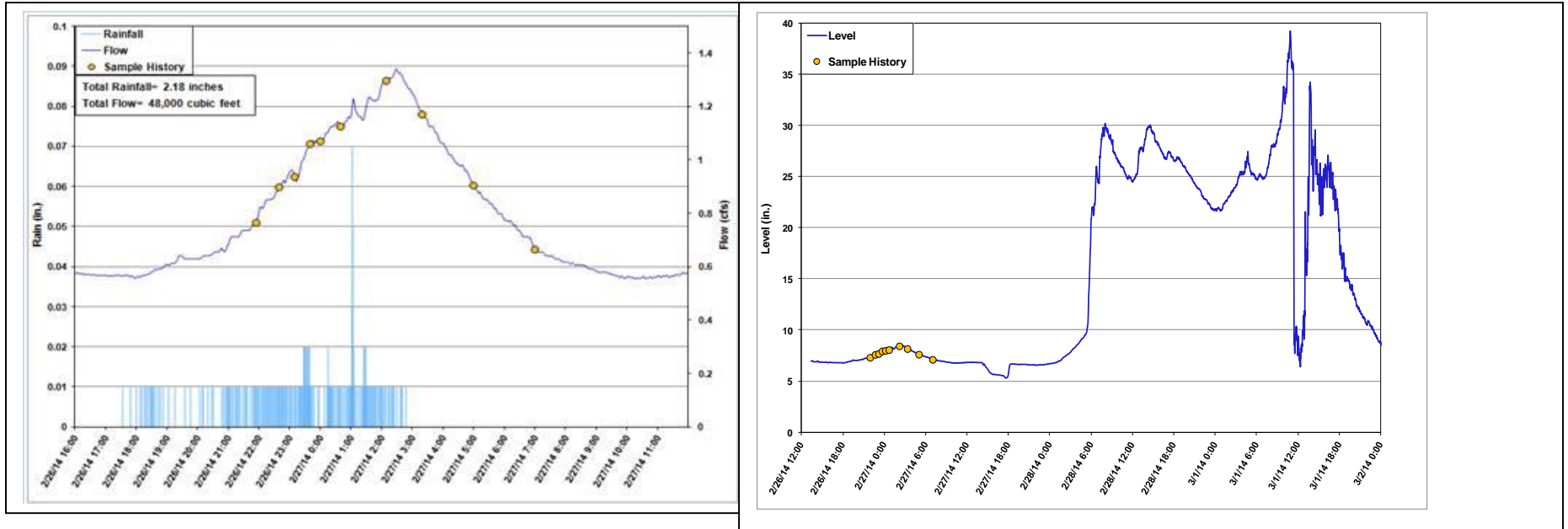


Figure D-10. Storm pollutograph of North Fork Matilija Creek (VRBM1) – wet weather event 1 (February 26–29, 2014) showing rainfall, flow and when samples were collected over time.

