

APPENDIX D

Maps of Benthic Condition at Sampling Sites

Table D-1. Characterization of response categories in coastal and embayment habitats. Coastal sites were evaluated using the BRI (Smith et al. 2001). Embayment sites were evaluated using the SQO Benthic Line of Evidence (Ranasinghe et al. 2009).

Benthic Response Level	Benthic Condition	Coastal Sites	Embayment Sites
Reference	Good	Reference	Reference
Level 1		Marginal deviation	Low Disturbance
Level 2	Poor	Biodiversity loss	Moderate Disturbance
Level 3		Community function loss or defaunation	High Disturbance

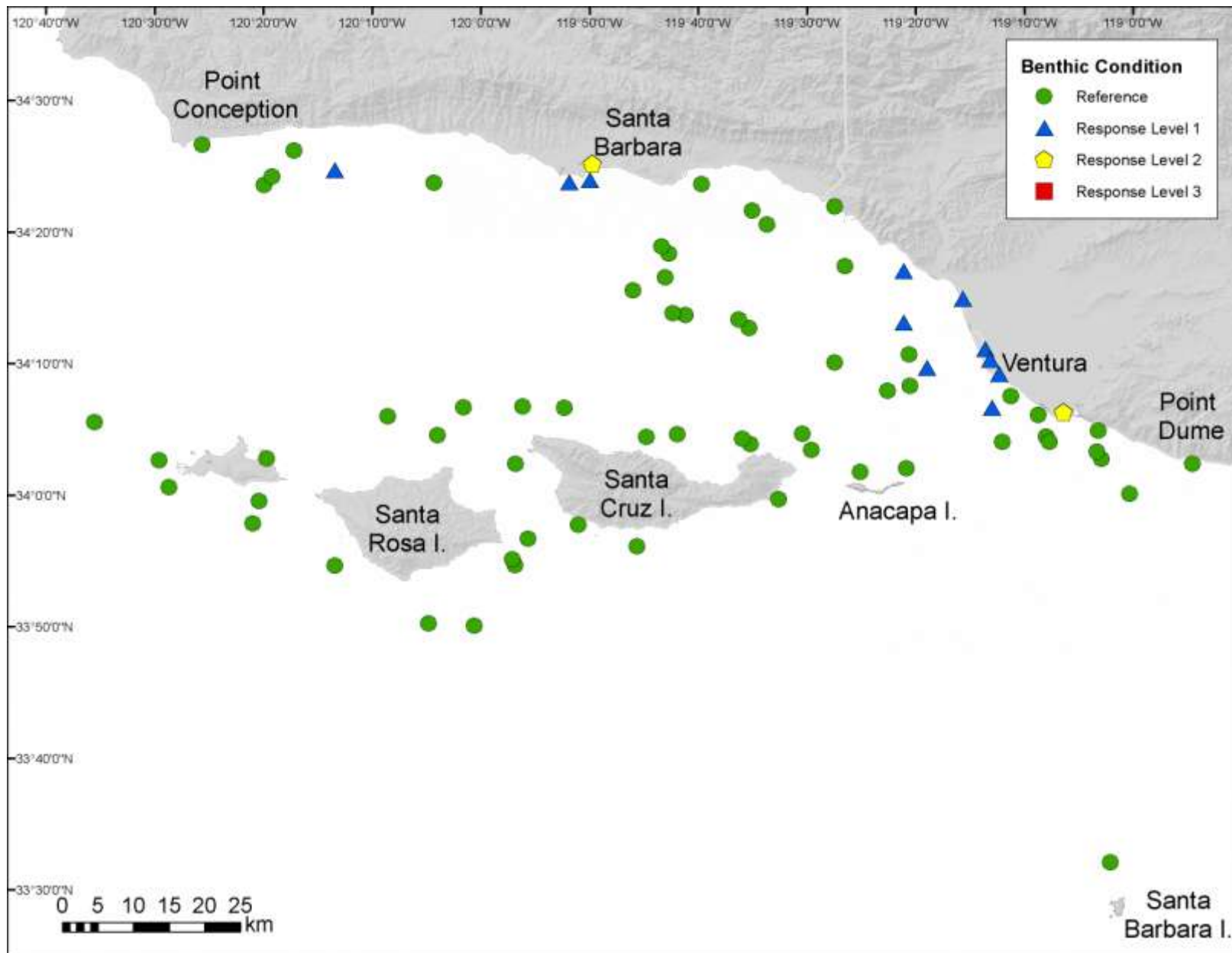


Figure D-1. Benthic Condition at sampling sites from Point Conception to Point Dume. Response Levels 2 and 3 are considered clear evidence of disturbed benthic communities. See Table B-1 for a detailed description of benthic condition categories.

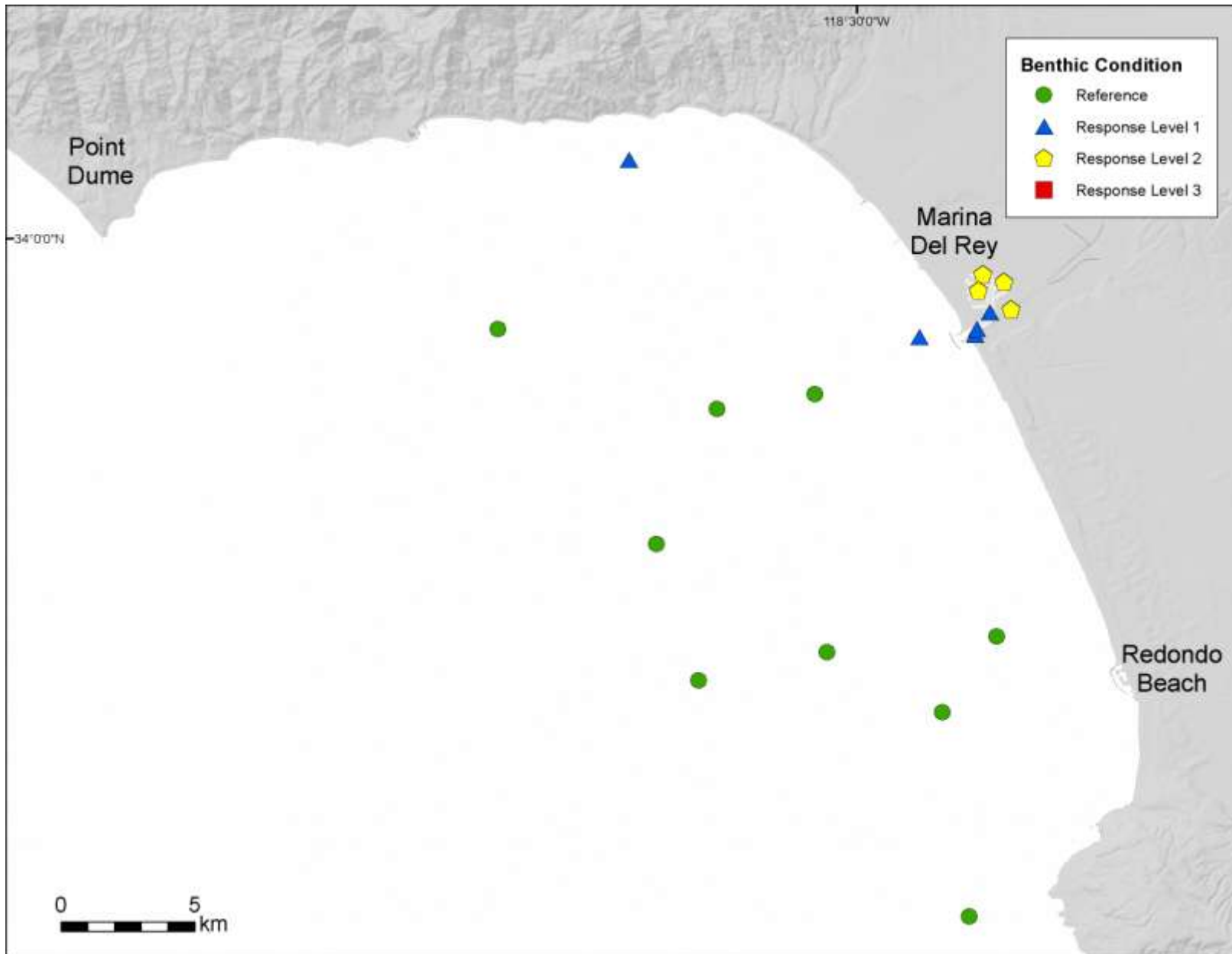


Figure D-2. Benthic Condition at Bight'08 sampling sites in Santa Monica Bay. Response Levels 2 and 3 are considered clear evidence of disturbed benthic communities. See Table B-1 for a detailed description of benthic condition categories.

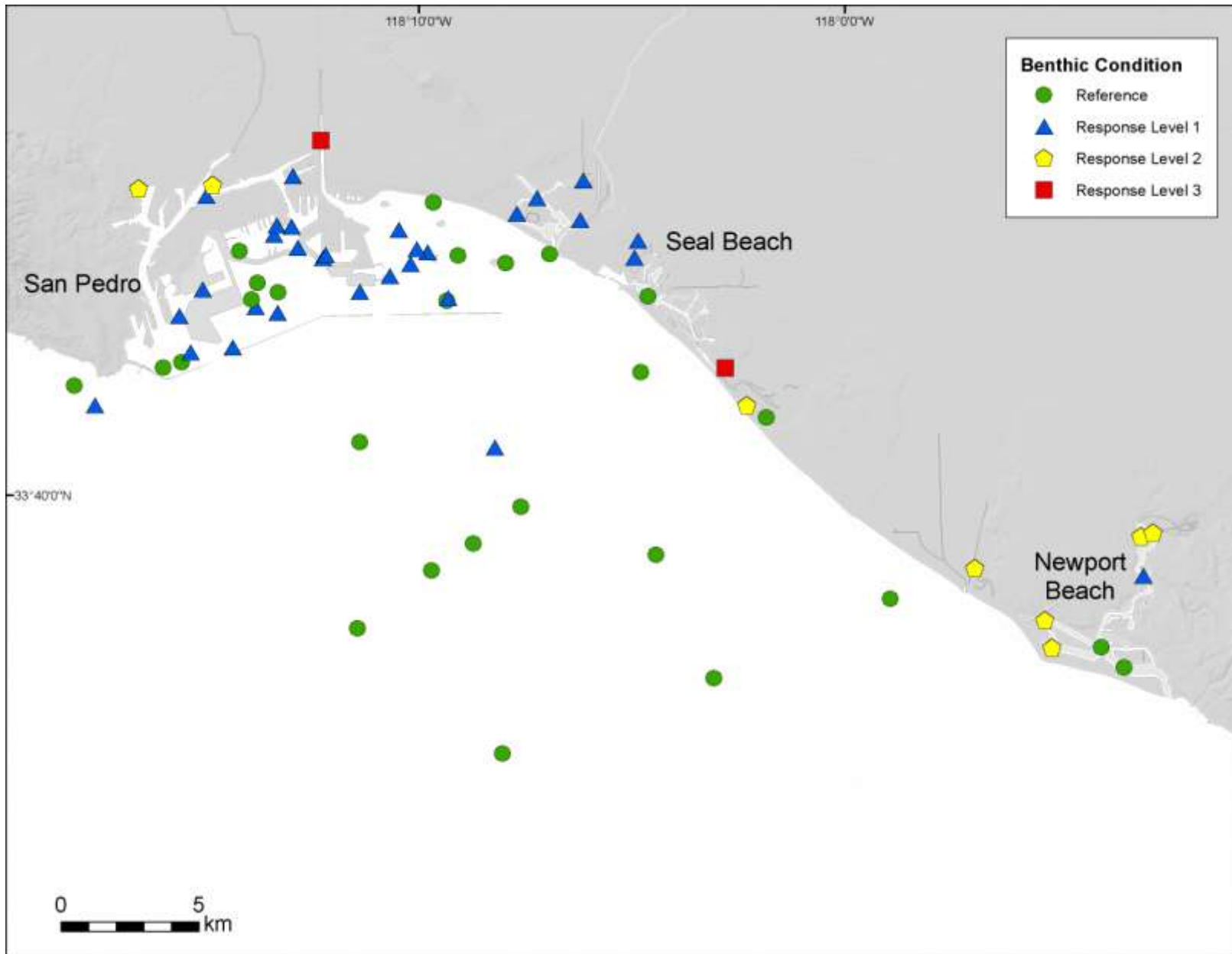


Figure D-3. Benthic Condition at Bight'08 sampling sites from San Pedro to Newport Beach. Response Levels 2 and 3 are considered clear evidence of disturbed benthic communities. See Table B-1 for a detailed description of benthic condition categories.

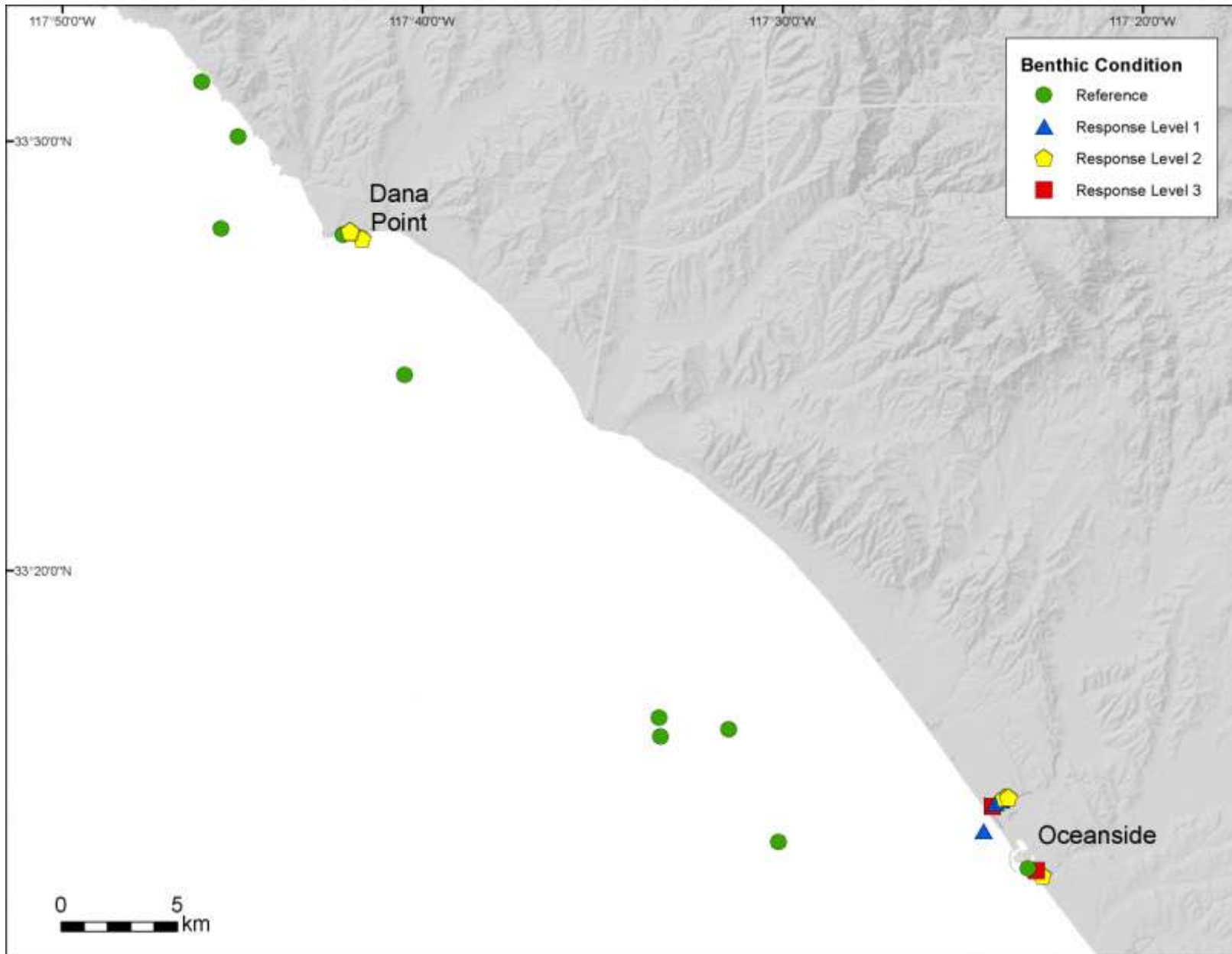


Figure D-4. Benthic Condition at Bight'08 sampling sites from Dana Point to Oceanside. Response Levels 2 and 3 are considered clear evidence of disturbed benthic communities. See Table B-1 for a detailed description of benthic condition categories.

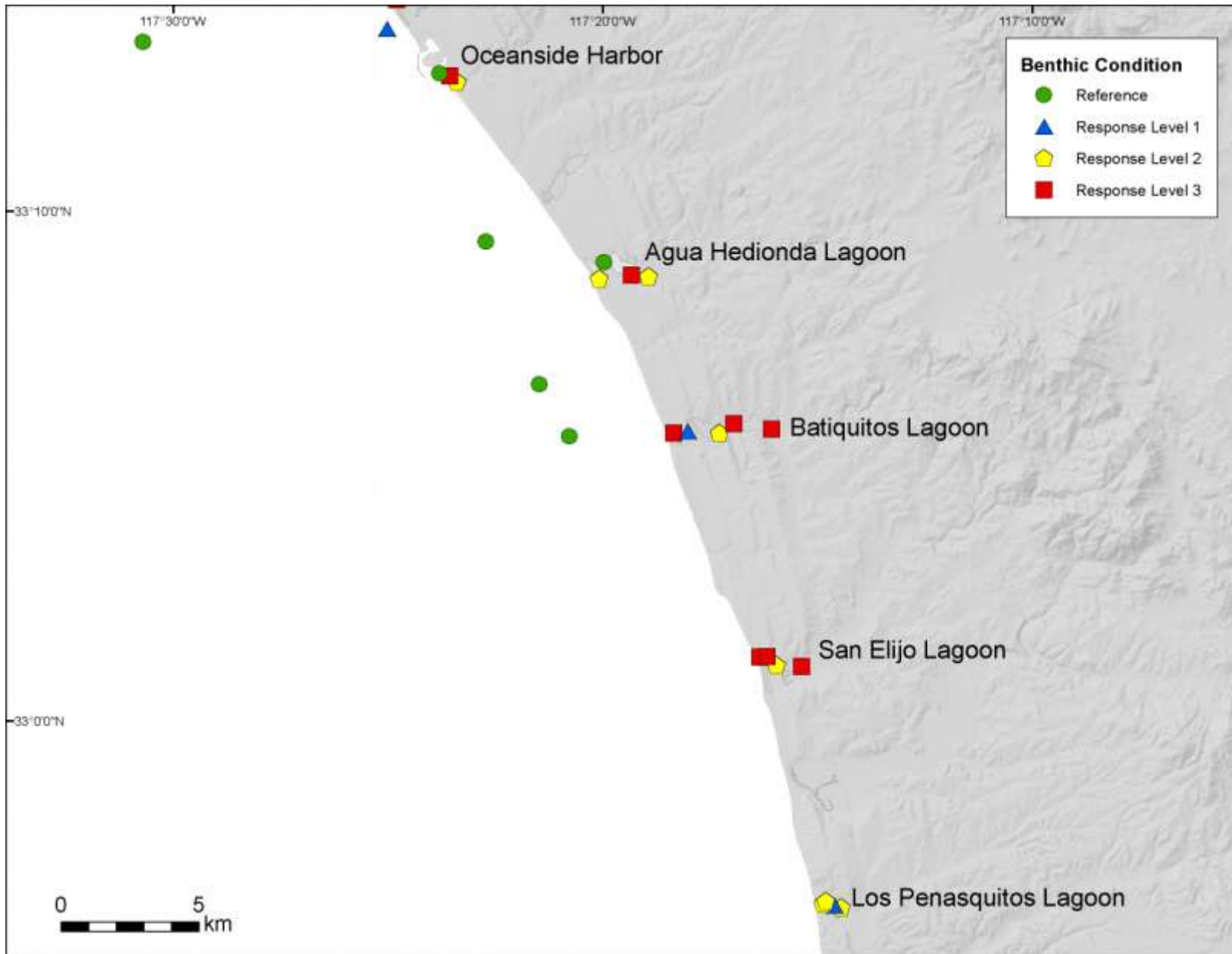


Figure D-5. Benthic Condition at Bight'08 sampling sites in North San Diego County. Response Levels 2 and 3 are considered clear evidence of disturbed benthic communities. See Table B-1 for a detailed description of benthic condition categories.

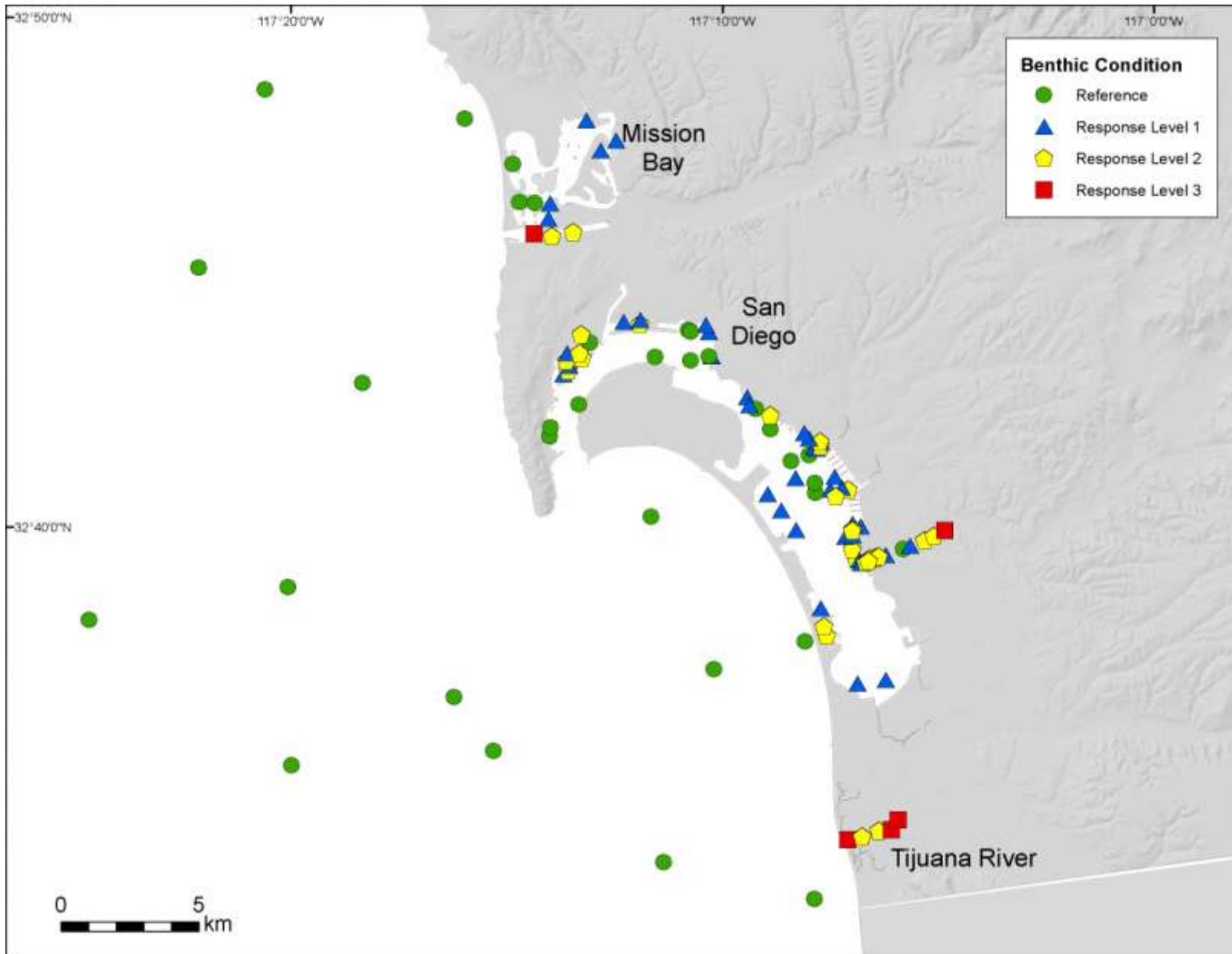


Figure D-6. Benthic Condition at Bight'08 sampling sites near San Diego. Response Levels 2 and 3 are considered clear evidence of disturbed benthic communities. See Table B-1 for a detailed description of benthic condition categories.