

State Water Board's Constituents of Emerging Concern (CECs) Program

2020 Science Advisory Panel for CECs
in Aquatic Ecosystems

Claire Waggoner
Sustainable Water Plans and Policies
Division of Water Quality



October 12, 2020

Water Boards Presentation Overview

Today
Oct. 12, 2020

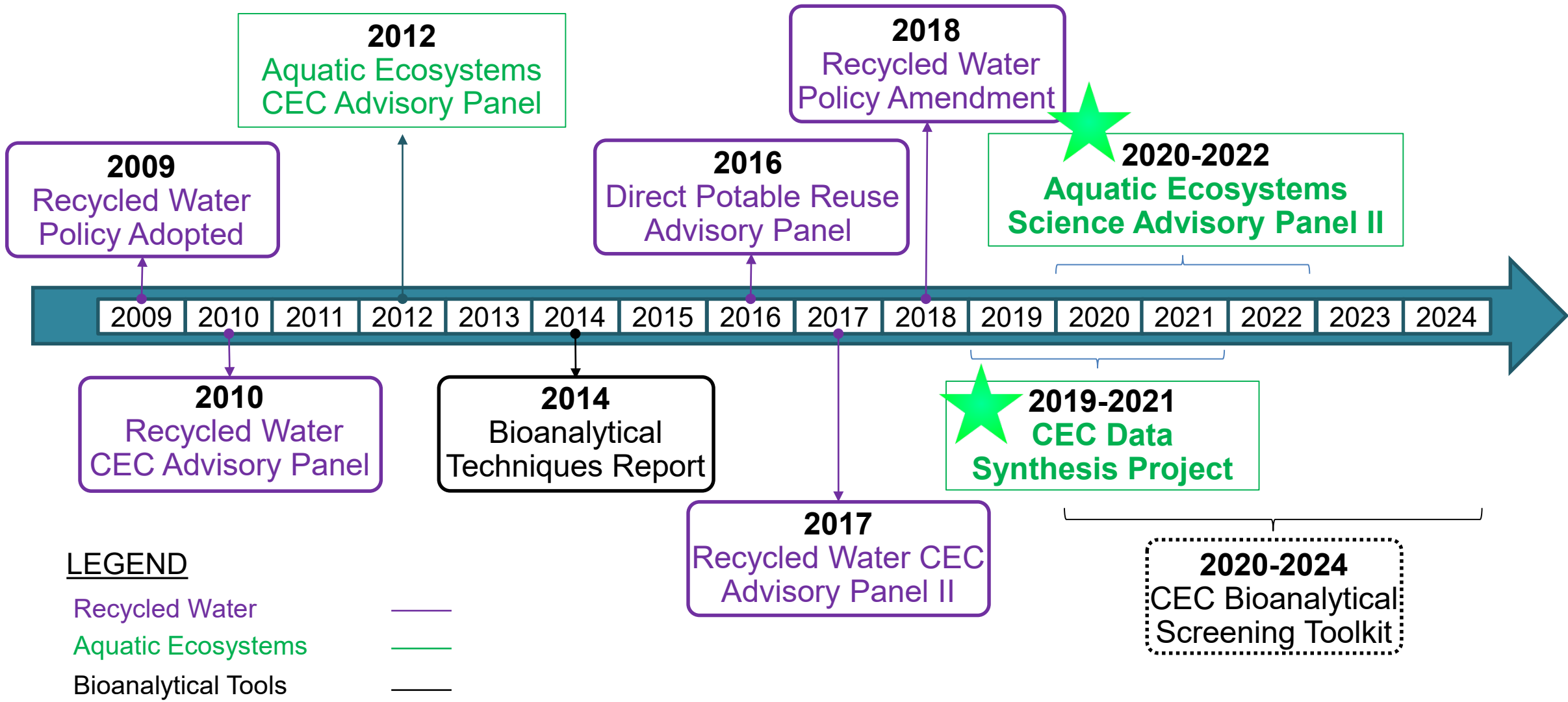
- Developing a statewide CEC Program
- Programmatic challenges
- Program recommendations



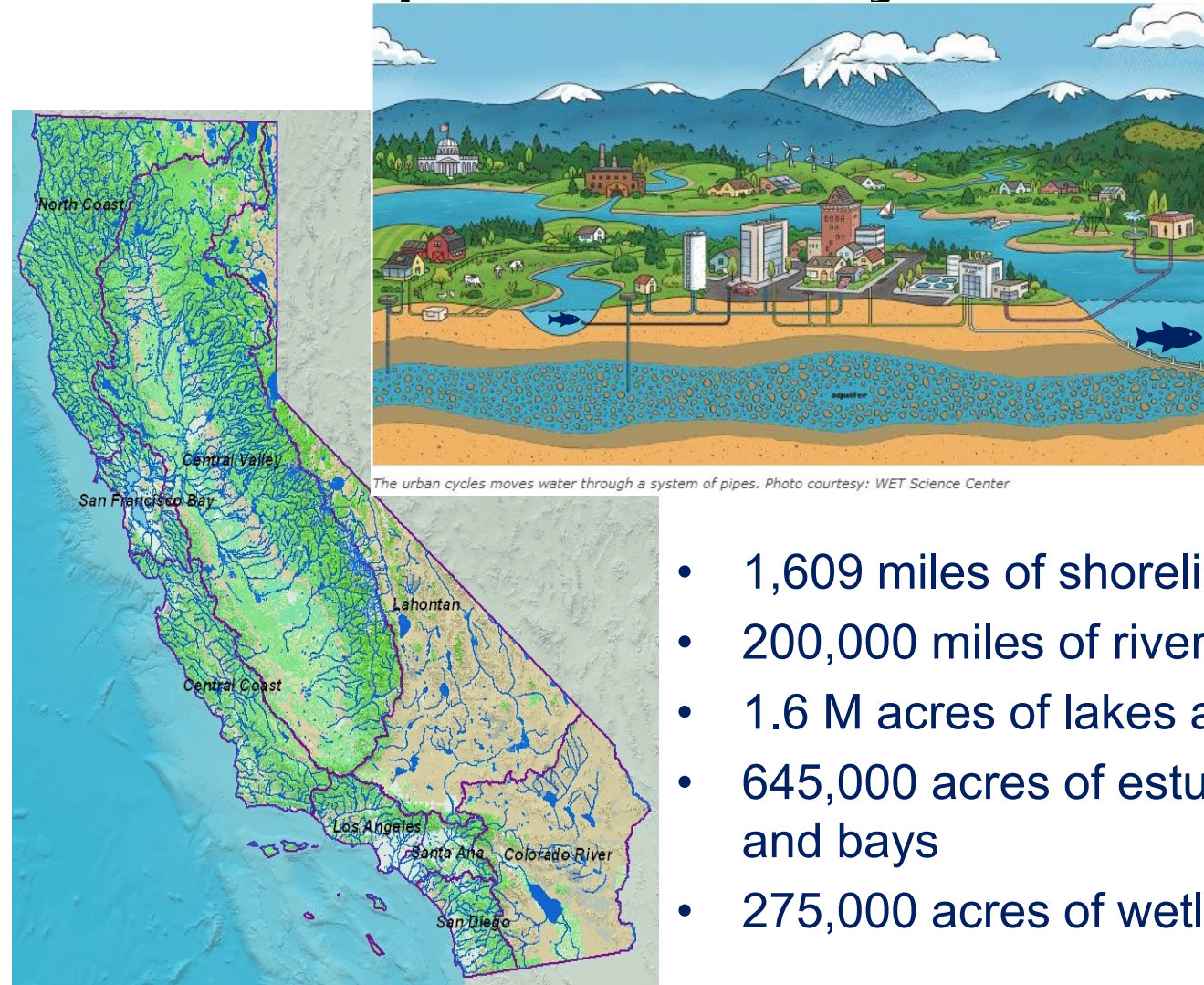
Tomorrow
Oct. 13, 2020

- State and Regional Water Boards success and challenges with implementation of 2012 CECs in Aquatic Ecosystems Panel Recommendations

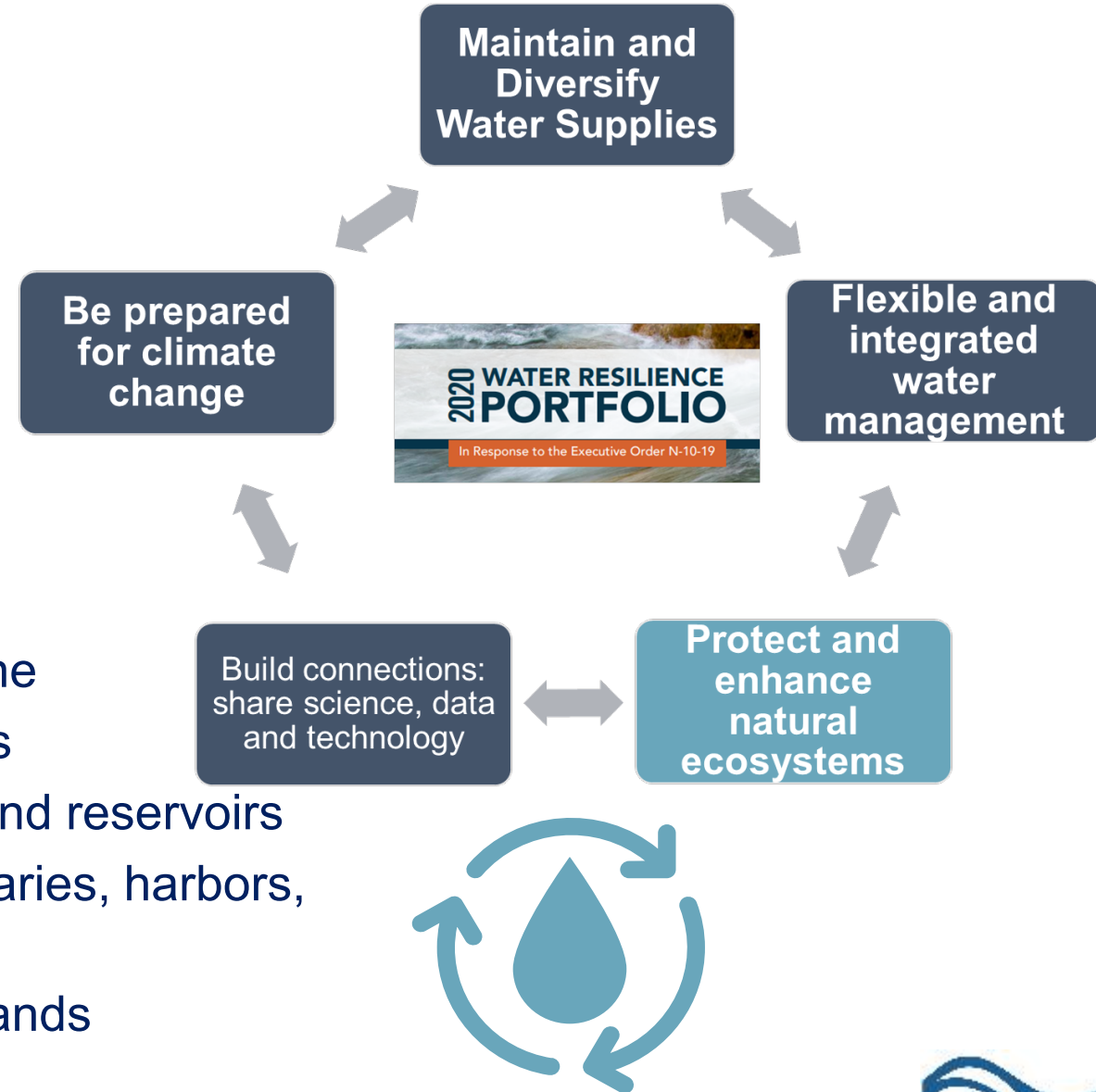
State Water Board CEC Science Advisory Panels and Projects



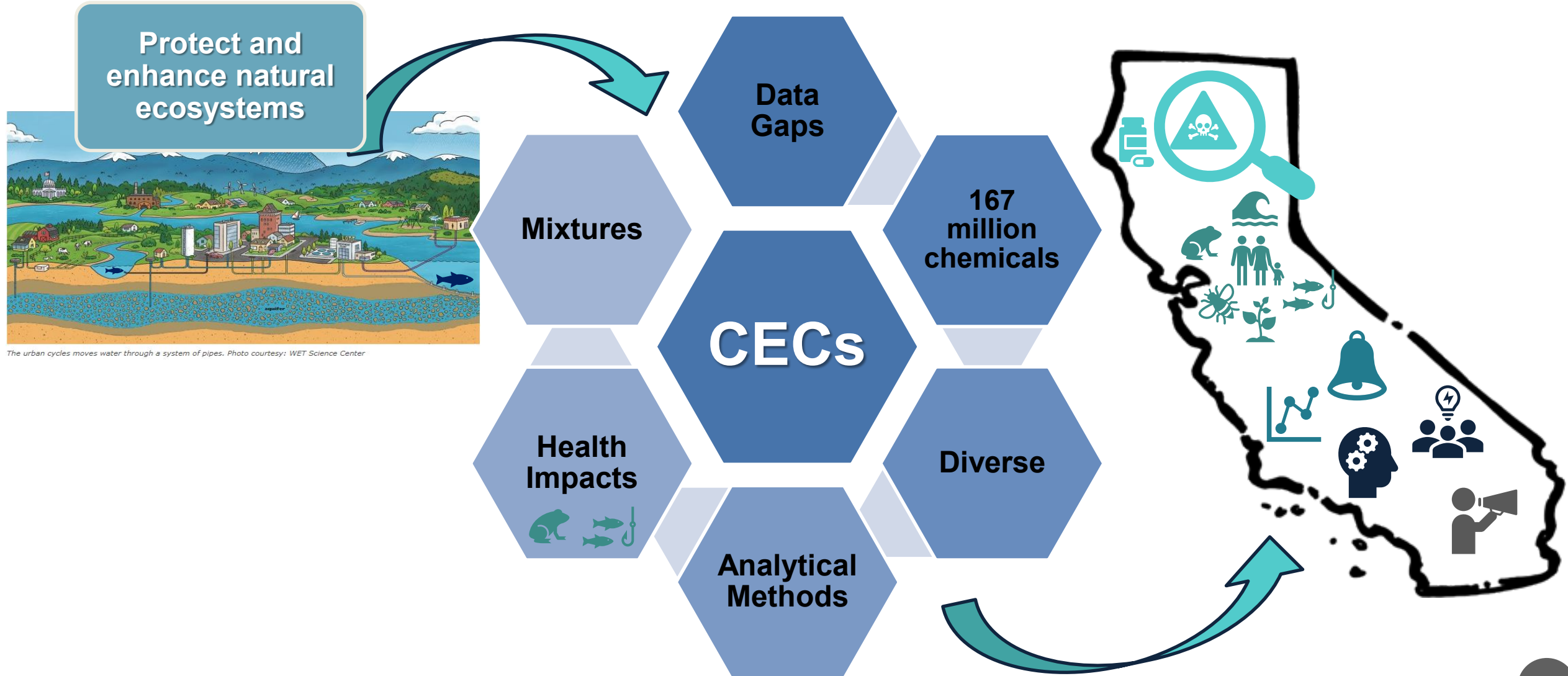
Water Quality, Water Resiliency, and Protecting CA's Aquatic Ecosystems



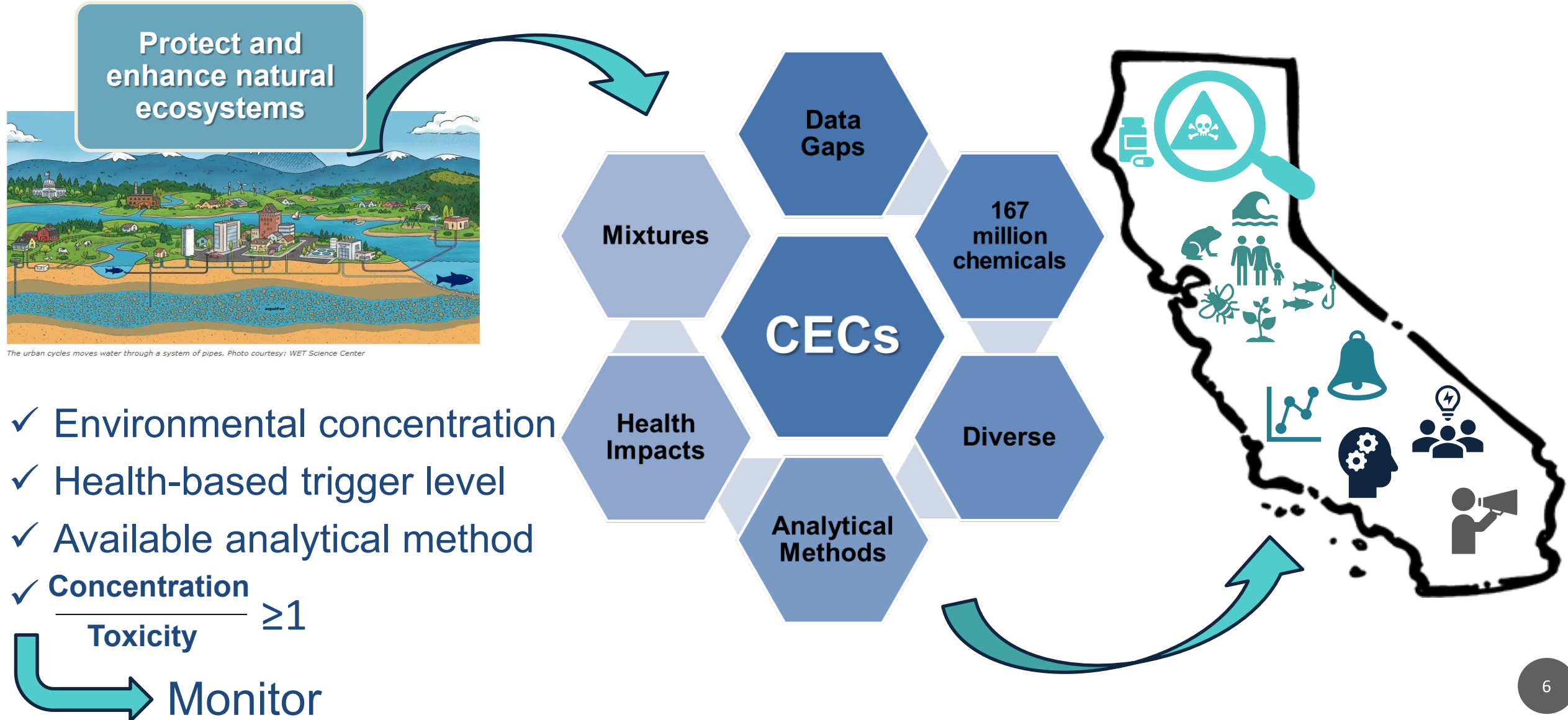
- 1,609 miles of shoreline
- 200,000 miles of rivers
- 1.6 M acres of lakes and reservoirs
- 645,000 acres of estuaries, harbors, and bays
- 275,000 acres of wetlands



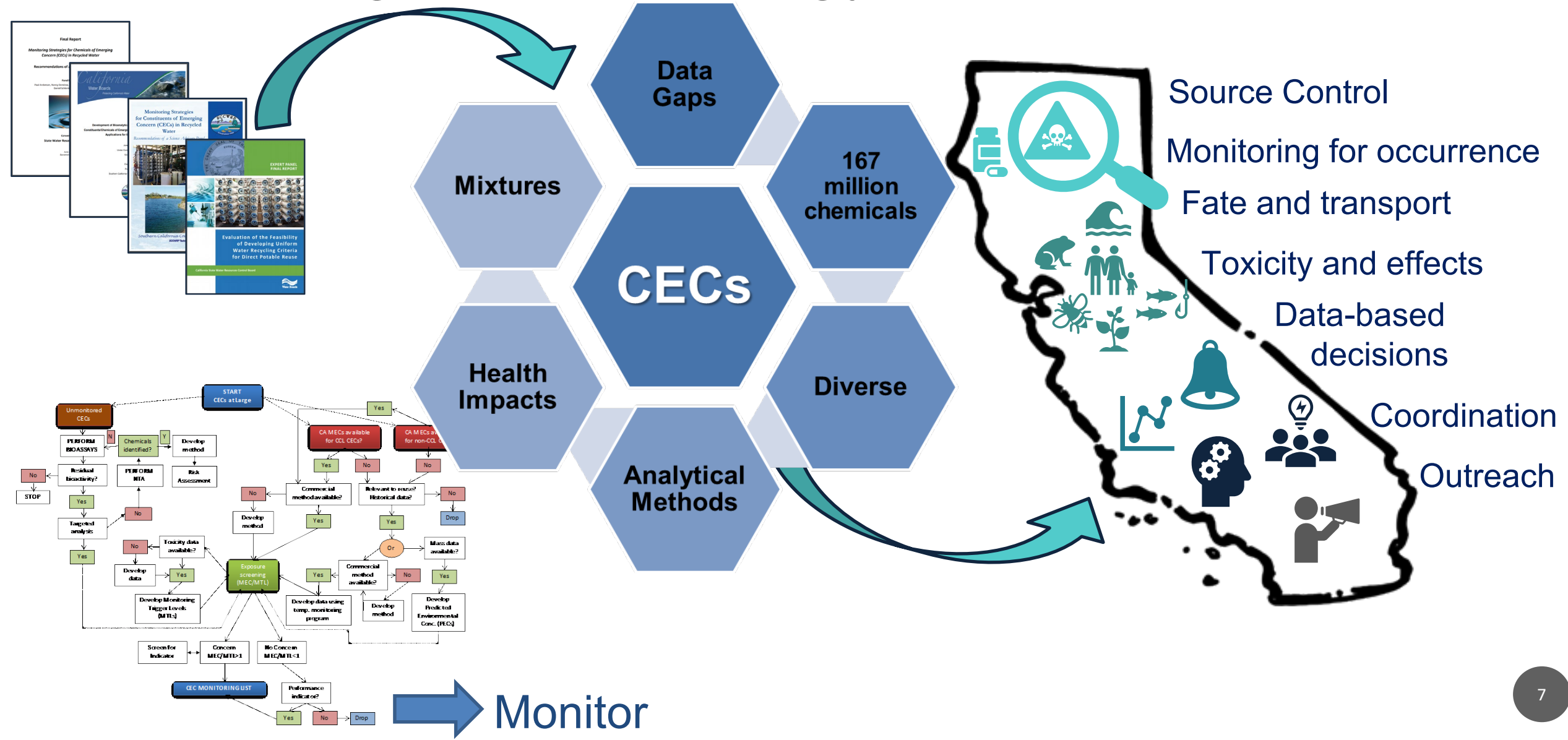
Challenges with Developing a Statewide CEC Management Strategy



Challenges with Developing a Statewide CEC Management Strategy

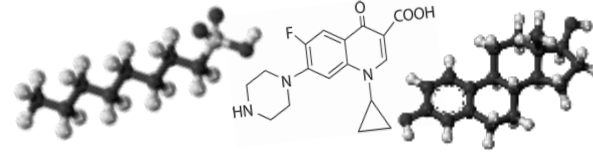


Panel's Recommendations Inform the Statewide CEC Management Strategy

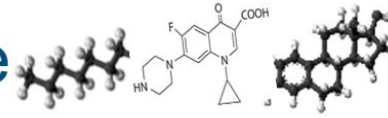




CEC Program



CEC Initiative



Outreach



Education



Science,
Data and
Research



Interagency
Coordination



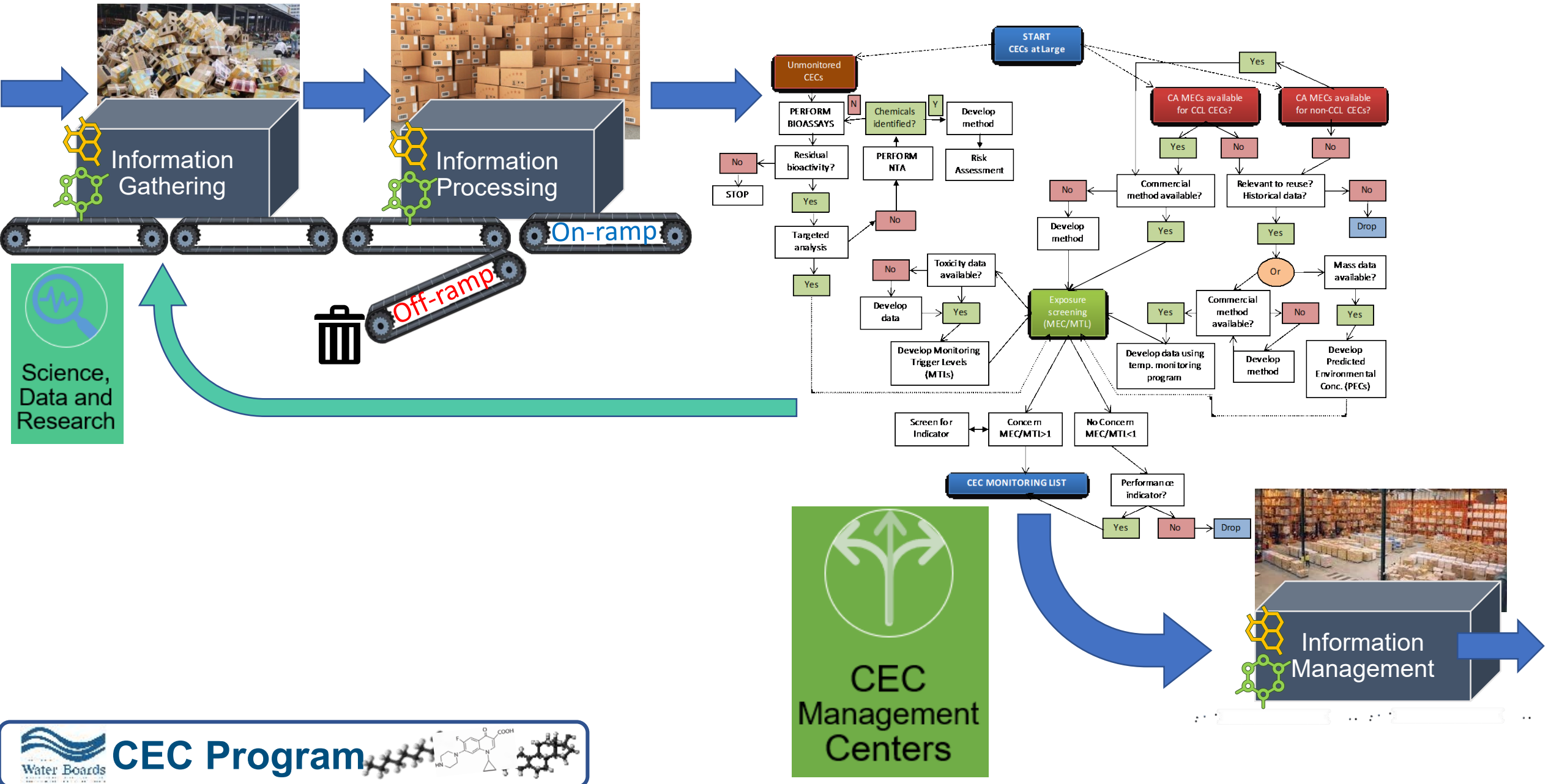
CEC
Management
Centers

CEC Program: statewide applicability, flexible, adaptive management

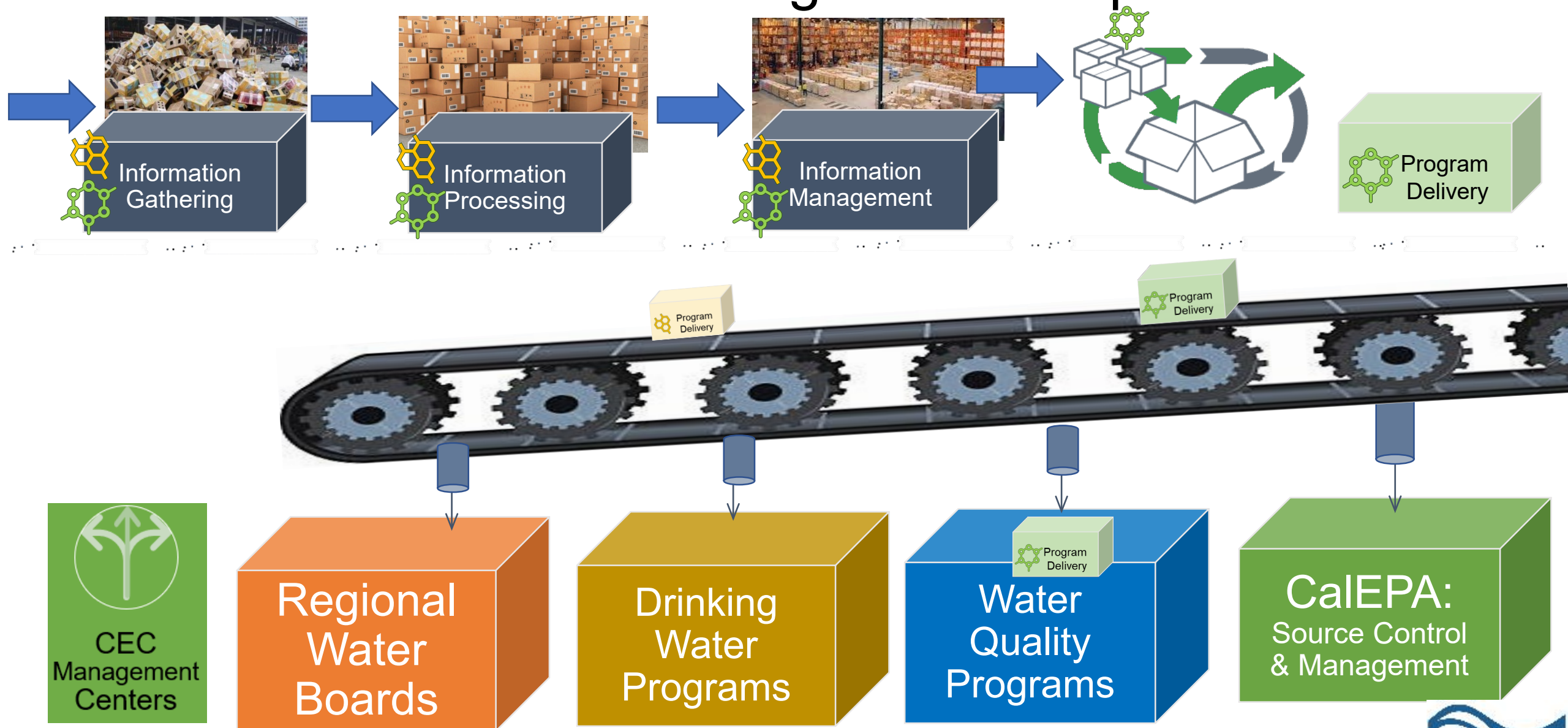
Draft Water Boards CEC Program Conceptual Model



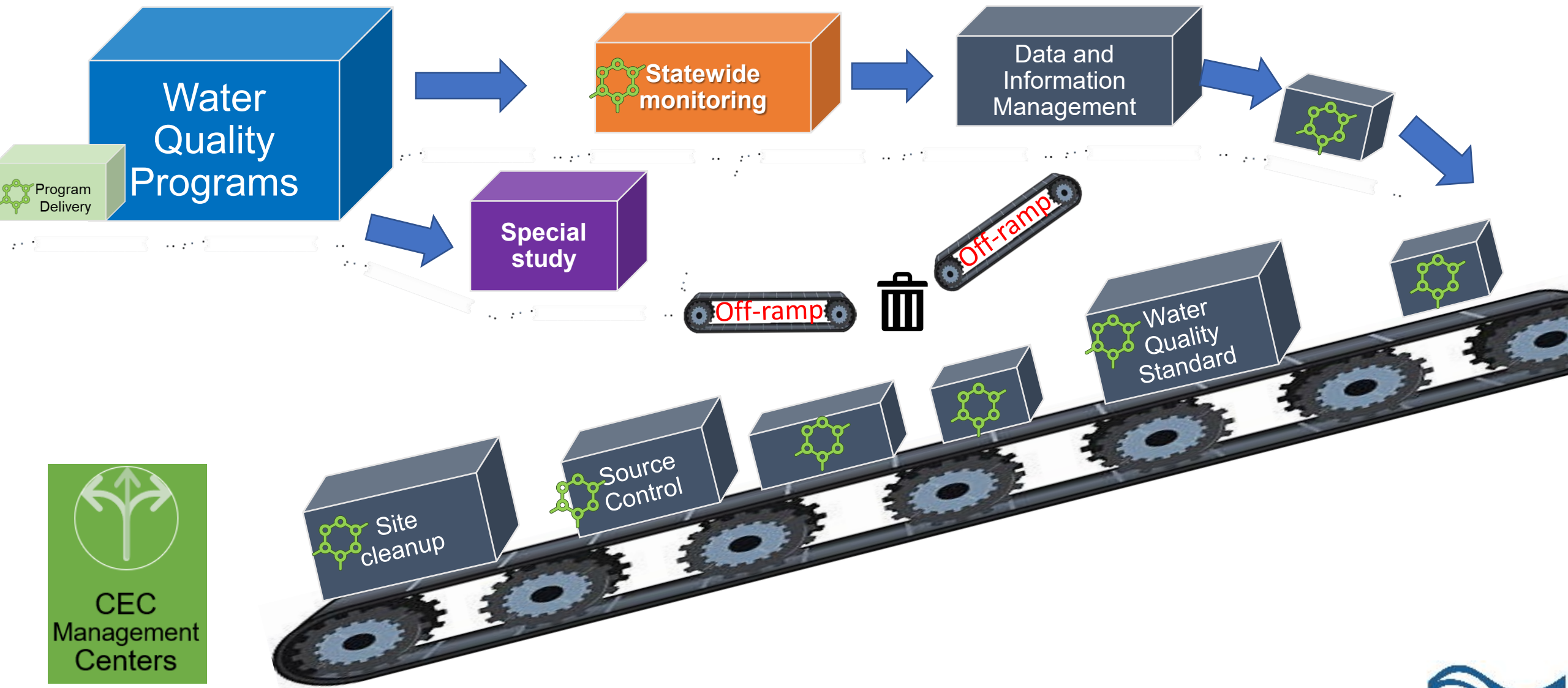
Draft Water Boards CEC Program Conceptual Model



Draft Water Boards CEC Program Conceptual Model



Draft Water Boards CEC Program Conceptual Model




2020 Aquatic Ecosystems Panel Charge



Update risk-based framework for CEC prioritization



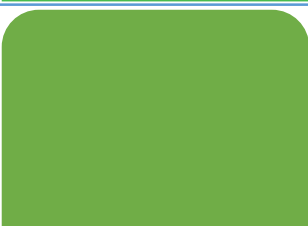
Consider classes of CECs rather than individual compounds, including data-poor classes of CECs



Identify sources, pathways, and rates of inputs of CECs to marine, estuarine, and freshwater ecosystems



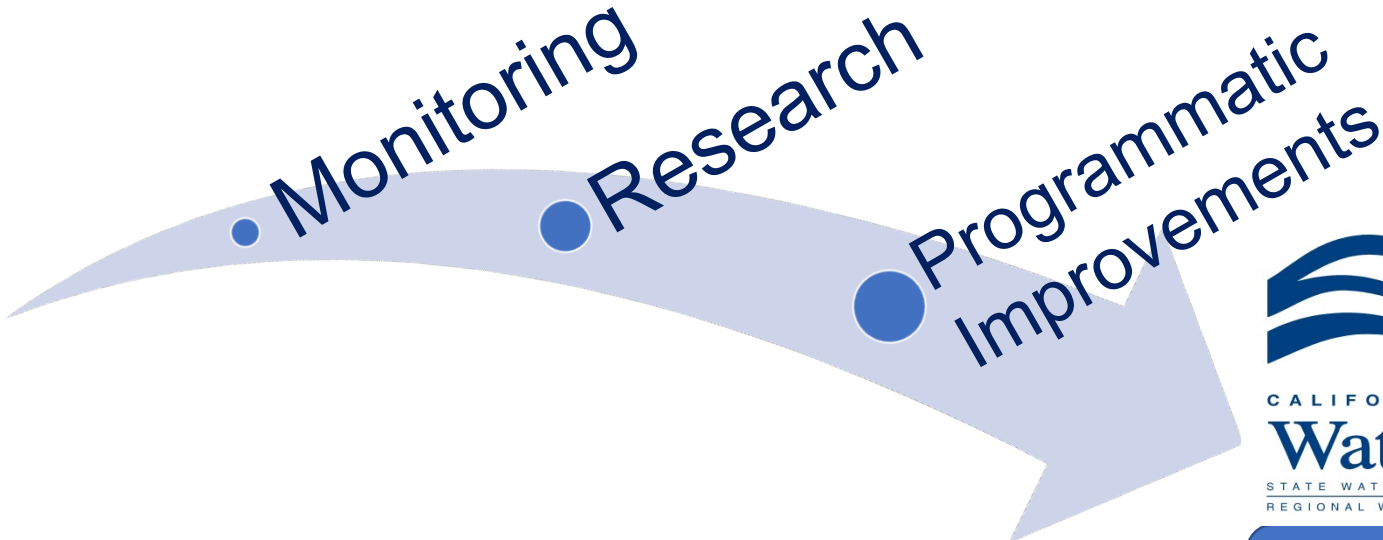
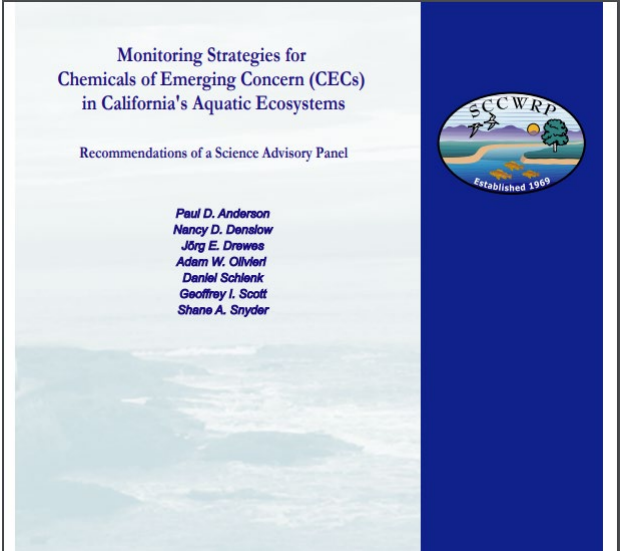
Evaluate known and unknown biological effects of CECs, including effects on sentinel species



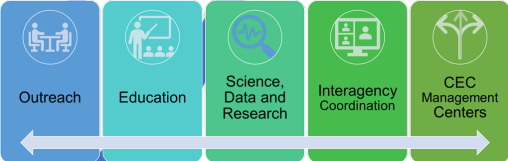
Identify how state agencies can better address classes of CECs in the environment through implementation of the risk prioritization framework

Implementation of Panel Recommendations

Panel's Recommendations



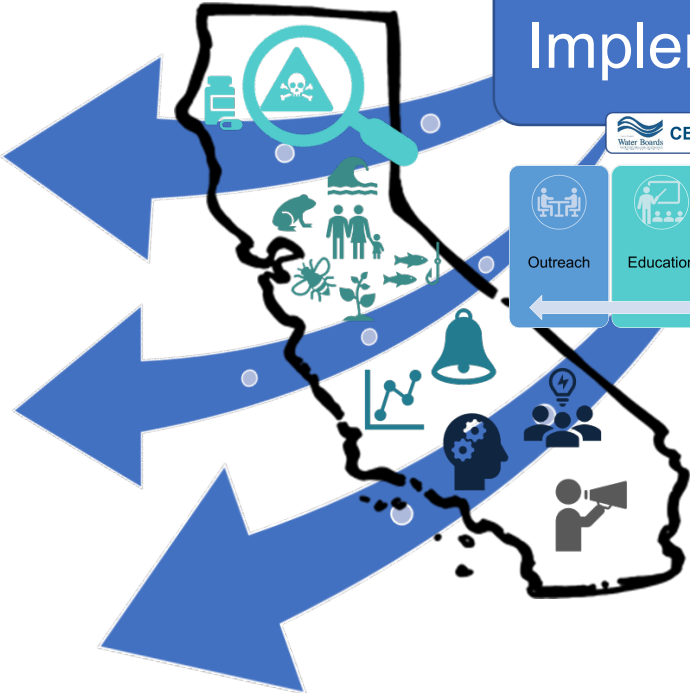
Implementation



CEC monitoring requirements in permits

Research and voluntary monitoring

Program Development



Thank You

Claire Waggoner

Claire.Waggoner@waterboards.ca.gov



October 12, 2020