
A multi-beach study of *Staphylococcus aureus*, MRSA, and enterococci in seawater and beach sand

Kelly D. Goodwin¹, Melody McNay², Yiping Cao, Darcy Ebentier, Melissa Madison and John F. Griffith

ABSTRACT

Incidences of *Staphylococcus aureus* and methicillin resistant *S. aureus* (MRSA) have risen worldwide prompting a need to better understand routes of human exposure and whether standard bacterial water quality monitoring practices adequately account for this potential threat. Beach water and sand samples were analyzed during summer months for *S. aureus*, enterococci, and MRSA at three southern California beaches (Avalon, Doheny, Malibu Surf Rider). *S. aureus* frequently was detected in samples of seawater (59%, n = 328) and beach sand (53%, n = 358). MRSA sometimes was detected in seawater (1.6%, n = 366) and sand (2.7%, n = 366) at relatively low concentrations. Site specific differences were observed, with Avalon Beach presenting the highest concentrations of *S. aureus* and Malibu Surf Rider the lowest in both seawater and sand. *S. aureus* concentrations in seawater and sand were correlated to each other and to a variety of other parameters. Multiple linear regression on the combined beach data indicated that significant explanatory variables for *S. aureus* in seawater were *S. aureus* in sand, water temperature, enterococci in seawater, and the number of swimmers. In sand, *S. aureus* concentrations were related to *S. aureus* in seawater, water temperature, enterococci in seawater, and inversely to surf

height classification. Only the correlation to water temperature held for individually analyzed beaches and for *S. aureus* concentrations in both seawater and sand. To provide context for these results, the prevalence of *S. aureus* in sand was compared to published fomite studies, and results suggested that beach prevalence was similar to that in homes.

INTRODUCTION

Microbial contamination of marine waters worldwide is estimated to cause millions of gastrointestinal and acute respiratory infections (ARIs; Shuval 2003) and numerous skin infections (Yau *et al.* 2009) every year. Marine-borne pathogens in the US cost over \$900 million per year, with \$300 million from gastrointestinal illness from beach recreation (Ralston *et al.* 2011). Marine-related food-borne illness from *S. aureus* was estimated at less than \$500,000 per year; unfortunately, data were not available to consider costs due to skin infections.

S. aureus is an opportunistic pathogen carried by 20 to 40% of people (Al-Zu'bi *et al.* 2004, Kluytmans and Wertheim 2005, Kuehnert *et al.* 2006) with an estimated ~0.8% of the US population (~2.3 million people) colonized by MRSA (Kuehnert *et al.* 2006). Incidence of infection from hospital- and

¹ National Oceanic and Atmospheric Administration (NOAA), Atlantic Oceanic & Meteorological Laboratory (AOML), Miami, FL

² University of Miami, Rosenstiel School of Marine and Atmospheric Science, Cooperative Institute of Marine and Atmospheric Studies, Miami, FL

community-onset *S. aureus* and MRSA is on the rise worldwide (Chambers 2001, Zetola *et al.* 2005). Unlike typical hospital-associated strains, some strains of community-associated *S. aureus* can cause infections in healthy people with no traditional risk factors for infection (Chambers 2001, Baba 2002, Eguia and Chambers 2004, Mulvey *et al.* 2005, Gorwitz 2008). Even though most patients are treated as outpatients, hospitalization rates remain substantial (Kuehnert *et al.* 2005, Jarvis *et al.* 2007). The proportion of skin and soft tissue infections caused by MRSA has risen substantially (Moran *et al.* 2005), and drug resistant infections place an additional \$5 billion burden on the United States health care system annually (Zhang *et al.* 2011).

Beaches have been suggested as a potential source of community-acquired *S. aureus* infection (Charoenca and Fujioka 1995, Soge *et al.* 2009). Support for this suggestion derives from concentrations of *S. aureus* and total staphylococci being correlated to GI illness and to skin, eye and ear infections among bathers (Seyfried *et al.* 1985, Calderon *et al.* 1991, Gabutti *et al.* 2000). *S. aureus* and MRSA are shed by swimmers (Robinton and Mood 1966, Hanes and Fossa 1970, Smith and Dufour 1993, Elmir *et al.* 2007, Plano *et al.* 2011), and both are found in beach seawater and sand (Goodwin and Pobuda 2009, Soge *et al.* 2009, Sinigalliano *et al.* 2010, Shah *et al.* 2011, Enns *et al.* 2012). *S. aureus* concentrations have been correlated to bather density and attributed to human activity (Calderon *et al.* 1991, Charoenca and Fujioka 1995, Papadakis *et al.* 1997, World Health Organization 2003).

It has been suggested that human activity is the source of *S. aureus* at the beach (El-Shenawy 2005). However, *S. aureus* also is found in stormwater (Selvakumar and Borst 2006) and in coastal streams that drain to the coast (Viau *et al.* 2011), and wastewater may be another source of *S. aureus* to the environment. Although some studies have not found viable cells or genetic signatures in treated municipal wastewater (Volkman *et al.* 2004, Shannon *et al.* 2007), other studies have found viable *S. aureus* and MRSA in raw (Ahtiainen *et al.* 1991, Rusin *et al.* 2003, Börjesson *et al.* 2009, Börjesson *et al.* 2010, Goldstein 2010) and secondary treated wastewater (Goldstein 2010). In addition to human inputs, domestic pets can be reservoirs for *S. aureus* and MRSA (Malik *et al.* 2006, Weese *et al.* 2006, Nuttall *et al.* 2008, Baptiste *et al.* 2009), and dogs

can be significant contributors of fecal indicator bacteria (FIB), to the beach (Wright *et al.* 2009, Zhu *et al.* 2011).

In an effort to reduce human exposure to microbial contaminants, recreational waters are monitored for FIB, such as enterococci (USEPA 2004, Dorman and Stoner 2007). In turn, beach closures can be costly; for example, a 4-month closure of a Southern California beach resulted in millions of dollars of lost revenue, and almost 2 million dollars was spent in closure investigation fees (Dwight *et al.* 2005). Despite the investment in FIB monitoring, there are concerns that it may overlook pathogens that are not primarily associated with feces (such as *S. aureus*), and that a complementary indicator may be warranted (Cheung *et al.* 1990). Staphylococci have been suggested as an alternative or complementary indicator for marine water quality (Seyfried *et al.* 1985, Cheung *et al.* 1990, Gabutti *et al.* 2000).

An additional concern is that current FIB guidelines do not monitor the concentrations of bacteria in beach sands, and concern is growing with regard to this exposure route (Heaney *et al.* 2009, Yamahara *et al.* 2009, Hartz *et al.* 2010, Halliday and Gast 2011, Phillips *et al.* 2011, Shibata and Solo-Gabriele 2012). There also is concern that even dead and injured cells deposited to the environment from treated wastewater may pose a threat because antibiotic resistance genes can be taken up by live bacteria (Ahtiainen *et al.* 1991, Martinez 2009, Börjesson *et al.* 2009, Börjesson *et al.* 2010). The transfer of *mecA* genes, which confers resistance to methicillin and other beta-lactam antibiotics, is thought to be relatively rare; however, as the abundance of *mecA* DNA has increased in the environment, the chance of transfer has increased (Chambers 2001).

In this study, the prevalence and concentration of *S. aureus* and MRSA were studied in both seawater and beach sand. Results were compared to enterococci seawater concentrations and environmental parameters. Correlation, regression and multivariate statistical analyses were performed to identify parameters descriptive of the measured bacterial concentrations and to explore whether FIB monitoring might reflect concentrations of *S. aureus* (a non-fecal pathogen) and whether FIB and pathogens might share conditions suggestive of environmental persistence. The study represents a large collection of samples analyzed for *S. aureus*

and MRSA from beach water (>320) and sand (>350) taken on 89 different sampling days.

METHODS

Sample Collection, Processing, and Bacterial Identification

Samples of sand and seawater were collected from beaches at Avalon, Doheny, and Malibu Surfrider beaches in California (Figure 1). Bulk water samples were collected as part of the Pacific Coast Water Study and processed as described previously in Converse *et al.* (2012). Processing of samples for *S. aureus* analysis was as described in Goodwin and Pobuda (2009) for Avalon and Doheny beaches. In addition, samples of seawater (40 - 300 ml) or sand (~120 g) were collected from Malibu Surfrider beach from May to September in 2009. A total of 12 beach sites, excluding sites in the lagoons at Malibu and Doheny, were tested on 89 different sampling days during the summers of 2007 to 2009. At Avalon (Figure 1) samples were collected on 46 different days; sites A, B, and C were tested in both 2007 and 2008, whereas



Figure 1. Aerial photos of Avalon and Malibu beaches (available from google.com) with sample sites depicted. Doheny beach is not shown because data from only one site is presented herein.

site D (Descanso Beach; separate watershed with less commercial development) was tested only in 2008. For Malibu Beach (Figure 1), samples were collected on 38 different days. Malibu sites A and B were near the lagoon outlet, and Site A also was near a housing development on septic system. Only a small number of samples were successfully processed for *S. aureus* from Doheny Beach (five sampling days) and from lagoon sites (e.g., between Malibu Sites A and B; Figure 1) due to overgrowth of nontarget colonies; data from lagoon sites were not included in the analysis here.

Filtered samples of water were incubated either on CHROMagar™ Staph aureus (SCA) or CHROMagar™ MRSA (BD Biosciences, San Jose, CA, USA) at 37°C for 24 hours for SCA and 48 hours for CHROMagar™ MRSA. Plates were refrigerated overnight prior to counting to allow for better color development. No enrichment or recovery step was used in this study. Putative *S. aureus* colonies were counted, and typically all or sometimes a representative number of colonies (~50%) was picked, streaked for isolation, and incubated as described above to confirm/adjust the initial count. Isolates were identified as *S. aureus* or MRSA through a combination of morphology and PCR as previously described (Goodwin and Pobuda 2009). Briefly, *S. aureus* was identified on SCA or CHROMagar™ MRSA plates as a mauve colony with matte halo. For the study here, 3,360 colonies were streaked for isolation to determine morphology and 846 isolates were checked by PCR. Previous work (Goodwin and Pobuda 2009) showed that combined filter and isolate appearance with these seawater and sand samples provided a good balance between sensitivity and specificity, with a positive % agreement (sensitivity), a negative % agreement (specificity), and % positive predictive accuracy of 84, 95, and 99%, respectively (Goodwin and Pobuda 2009).

PCR confirmation of isolate identity utilized primers to amplify the *clfA* gene (*ClfA-F*, 5'-GCAAATCCAGCACAAACAGGAAACGA-3'; *ClfA-R*, 5'-CTTGATCTCCAGCCATAAT TGGTGG-3'; Mason *et al.* 2001; Figure 2A) and some samples also were tested for the presence of the staphylococcal 16S rRNA gene (Mason *et al.* 2001). For colonies isolated from CHROMagar™ MRSA and that were positive for *S. aureus* by PCR, MRSA confirmation utilized primers to amplify the *mecA* gene (*mecA-F*,

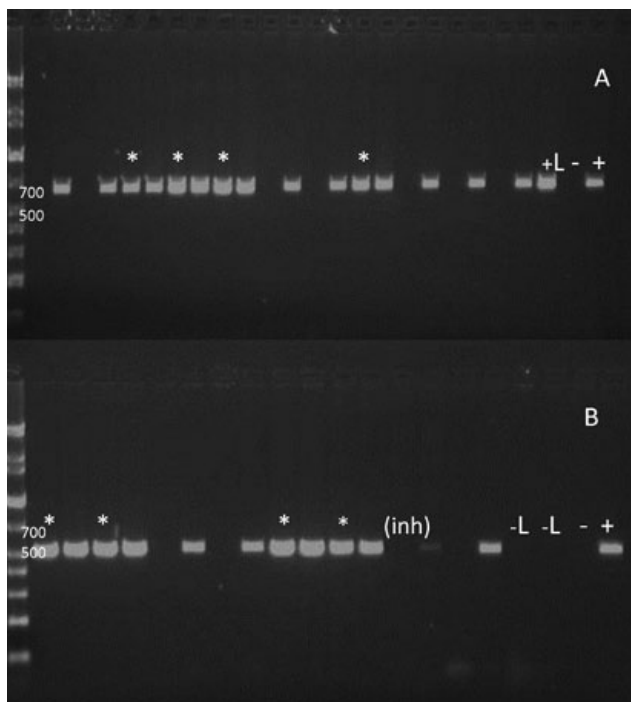


Figure 2. Agarose gel electrophoresis photos for bacteria isolated from Avalon beach and amplified with *cfA* primers (A) or *mecA* primers (B). Pairs of wells contain sample amplicon and the corresponding inhibition control (sample plus spike of positive control DNA). * represents a positive sample, (inh) represents a partially inhibited sample, - represents a no template control, + represents a positive DNA control, +L represents a crude lysate from a *S. aureus* colony, and -L represents *S. aureus* crude lysate; however, because the culture was not MRSA, no *mecA* amplicon was expected. The first lane of each gel contains a DNA ladder with the 500 and 700 bp bands identified.

5'-TCCAGGAATGCAGAAAGACCAAAGC-3'; *mecA*-R, 5'-GACACGATAGCCATCTTCATGTTGG-3'; Mason *et al.* 2001, Goodwin and Pobuda 2009; Figure 2B). Amplification reactions were carried out using 1X Phusion™ HF Buffer (containing 1.5 mM MgCl₂), 0.2 mM dNTPs (BioRad), 0.5 μM of each primer, 0.3 mg/ml bovine serum albumin (BSA), 0.5 μl (1 U) Finnzymes Phusion Hot Start High Fidelity DNA Polymerase (NEB, Ipswich, MA), 1 μl of cell colony lysate, and nuclease-free water for a final volume of 50 μl. Amplification conditions were as follows: 98°C for 30 seconds; 35 cycles of 98°C for 5 seconds, 60°C for 10 seconds, 72°C for 15 seconds; a final 8-minute extension at 72°C. Inhibition controls consisted of a sample reaction spiked with positive control DNA (0.5 μl of 10 pg/μl stock). The presence of an inhibition control band but not a sample band was used to verify negative reactions (Figure 2). Inhibited samples were

diluted 1:5 and re-run to verify the negative reaction. Positive controls consisted of a DNA control and crude lysate control as described in Goodwin and Pobuda 2009.

Data Analysis

Two main types of data analysis were conducted: i) descriptive statistics to explore general frequency and trend results at the study sites and ii) correlation and regression analyses to explore relationships between *S. aureus*, enterococci, and other non-microbial parameters measured in the study. To best deal with samples below the limit of detection (“nondetects”) and varying detection limits, statistical methods specially designed to handle censored data were used (Helsel 2005). This method is regarded as superior to value substitution for nondetects in data analysis (Helsel 2010). For comparison with the censored data approach, data were analyzed with standard linear regression using traditional value substitution for nondetects (referred as non-censored data hereon).

Descriptive Statistics

Percent frequency of detection described the percentage of samples positive for *S. aureus*, enterococci, or MRSA; calculated as the numbersamples with one or more target colonies out of the total number of samples in which countable data was obtained for that target. The mean, standard error, standard deviation, median, confidence intervals, and percentiles of *S. aureus* and enterococci concentrations were computed using the nonparametric Kaplan-Meier method with Efron bias correction via the macros %KMSTATS and %BootKM for Minitab® 16 software (available at www.practicalstats.com). These macros adapted the Kaplan-Meier method to deal with nondetects (left-censored data) by flipping the data to right-censored before calculation (Helsel 2005). Descriptive statistics also were calculated by ROS estimation with the macro %bootros; however, results were equivalent so only the Kaplan-Meier statistics were presented here.

The median detection limit for *S. aureus* was 0.67 CFU/100 ml (range 0.33 - 4 CFU/100 ml), and the median detection limit for enterococci was 1 CFU/100 ml (range 1 - 100 CFU/100 ml). Nondetects with a detection limit greater than 2 CFU/100 ml for *S. aureus* and 4 CFU/100 ml for enterococci were removed for calculation and

comparison of descriptive statistics. This removed 8 data points for *S. aureus* (6 from Doheny, 2 from Avalon 2008) and 5 for enterococci (3 from Doheny, 2 from Avalon 2007). The actual detection limit for each sample was otherwise utilized. No values were removed from the sand data (the typical detection limit was 3.03 CFU/100 dry g). For MRSA data, the number of nondetects was greater than 50%, rendering the descriptive statistics of limited value due to high uncertainty. Therefore, MRSA data were described in terms of the % of samples above threshold and the 95% upper confidence limit (UCL) for the mean (Helsel 2005).

Median concentrations for *S. aureus* and enterococci for three or more groups of censored data were compared using a Kruskal-Wallis multiple comparison testing using the %censKW macro with an alpha 0.05 subcommand. Comparisons between two groups of censored data used a Mann Whitney-U test by executing the %censMW macro. Censored boxplots were generated using the %cbox macro.

Correlation and Regression Analyses

Relationships between *S. aureus*, enterococci, and other non-microbial parameters were explored via simple correlation/regression and multiple linear regression analyses. In general, a bacterial concentration (*S. aureus* in seawater, *S. aureus* in sand, or enterococci in seawater) was compared to the set of remaining variables. The following continuous variables were utilized: 1) *S. aureus* seawater concentration (ln CFU/L); 2) *S. aureus* sand concentration (ln CFU/100 g dry sand); 3) enterococci seawater concentration (ln CFU/L); 4) water temperature (°C); 5) number of swimmers counted during sampling; 6) number of persons with water contact determined via questionnaire; 7) number of dogs; 8) number of birds; 9) tide (m). The following ordinal variables were utilized: 10) surf height classification (0 = none; 0.76 = low, 0.3 - 0.9 m; 1.5 = moderate, 1.2 - 1.8 m; high = 2.1 + m); 11) wind classification (0 = none; 1 = light; 2 = moderate; 3 = strong); and 12) turbidity classification (0 = clear; 1 = calm; 2 = slightly turbid; 3 = choppy; 4 = turbid). Data were analyzed per individual beach and for the combined data. In addition, analysis of Malibu Surfriider beach included berm flow (0 = open; 1 = closed).

First, simple correlation was used to test association between two variables: a bacterial concentration of interest and another variable (see

above). The nonparametric Kendall's tau correlation coefficient and test of significance was calculated using the macro %Ckend for Minitab® 16 software (Helsel 2005). The Kendall's tau analysis used a rank-based measure of association and allowed one or both variables to include nondetects, multiple detection limits, and required no assumption about the distribution of the data. The macro returned values for both tau-a and tau-b (which ignores ties) in a range of -1 to 1, with a zero value supporting the null hypothesis of no correlation between the variables. One advantage of a Kendall tau test was that it generated a p-value, which tested whether the value was significantly different from zero. For comparison, the Kendall tau value runs about 0.2 lower than a Pearson's r value for an equivalent strength of correlation (D. Helsel, personal communication). The nonparametric regression line associated with the Kendall's tau, the Akrita-Theil-Sen (ATS) line, was calculated using the %ATS macro command (Helsel 2005).

Next, multiple linear regression was conducted between one dependent and multiple independent variables (described above) to obtain a best-fit model describing bacterial concentrations. The goal of the regression analysis was descriptive so interaction and nested terms were not evaluated. Regression with censored data was performed using the Minitab® 16 option for regression with life data (arbitrary censored option) and maximum likelihood estimation (MLE). Model selection was based on p-values for the coefficients (typically $\alpha = 0.01$), with insignificant terms sequentially removed. Models with significant terms were further evaluated using the likelihood-ratio test which compared the model to the null using the equation $-2 \times (\log\text{-likelihood of the null model} - \log\text{-likelihood of model})$; test statistics with p-values less than 0.01 were considered significant. Test statistic p-values were calculated via the chi-square distribution with the degrees of freedom equal to the number of estimated coefficients in the model subtracted by the number of estimated coefficients in the null model, as per Minitab® instructions.

In addition, typical regression analysis with non-censored data (i.e., value substitution) also was performed. This analysis returned information regarding model fit including residual plots, Anderson-Darling statistics, and variance inflation factors to identify multi-co-linearity. Furthermore, principal component analysis, stepwise regression, and best subset analysis was performed to help

understand the data structure and to inform and confirm results from the multiple linear regression analysis. Additionally, the distributions of *S. aureus* in sand and seawater and of enterococci in seawater were analyzed using both censored and non-censored data, with output including probability plots and goodness-of-fit tests.

RESULTS

Microbe Detection Frequency and Concentrations at the Study Sites

S. aureus in Seawater

S. aureus was frequently detected in seawater. The average % detection frequency for seawater was 59% (n = 328) for the combined beaches (Table 1).

For Avalon, the average % detection frequency was 76% for the two summers studied. For Malibu Surfriider, the average % detection frequency was 46%. Only eight Doheny seawater samples were successfully enumerated for *S. aureus* due to overgrowth of plates, and all were positive for *S. aureus* (100%). The mean concentration of *S. aureus* in the seawater samples estimated by Kaplan-Meier statistics was 10 CFU/100 ml and the median concentration was 0.83 CFU/100 ml, with data for individual beaches given in Table 1.

Kruskal-Wallis multiple comparisons tests ($\alpha = 0.05$) showed that the median seawater concentration of *S. aureus* was significantly lower at Malibu Surfriider compared to the other beaches (Figure 3). Within Malibu, the four beach sites (Figure 1) had

Table 1. Detection frequency and concentration of *S. aureus* and MRSA in seawater and sand. NC = not calculated.

| | <i>S. aureus</i> | Enterococci | MRSA |
|--|----------------------------------|--|---|
| Detection Frequency Seawater | | | |
| All | 59% | 79% | 1.60% |
| Concentration Seawater (CFU/100 ml) | Mean (95% CI); Median (n) | Mean (95% CI); Median (n) | Mean (95% UCL); Range Observed (n) |
| All | 10 (7.3-15); 0.83 (n = 328) | 42 (28-59); 6 (n = 331) | 0.65; 0.33-2.5 (n = 366) |
| Avalon | 23 (15-33); 5.0 (n = 132) | 68 (45-105); 30 (n = 132) | NC |
| Doheny | 5.3 (2.7-7.9); 4.0 (n = 8) | 148 (15-388); 20 (n = 11) | NC |
| Malibu | 1.8 (1.3-2.5); 0.69 (n = 188) | 17 (8.8-27); 2.0 (n = 188) | NC |
| Detection Frequency Sand | | | |
| All | 53% | 71% | 2.70% |
| Concentration Sand (CFU/100 dry g) | Mean (95% CI); Median (n) | Mean (95% CI); Median (n) | Mean (95% UCL); Range Observed (n) |
| All | 187 (98-390); 7.7 (n = 358) | 5086 (3331-10,755); 13 (n = 238) | 2.5; 5-78 (n = 366) |
| Avalon | 402 (192-830); 111 (n = 159) | 24,009 (16,197-47,930); 3198 (n = 49) | NC |
| Doheny | 58 (37-117); 25 (n = 11) | 8646 (1146-16222); 3976 (n = 5) | NC |
| Malibu | 21 (12-40); 4.9 (n = 188) | 54 (39-75); 12 (n = 184) | NC |

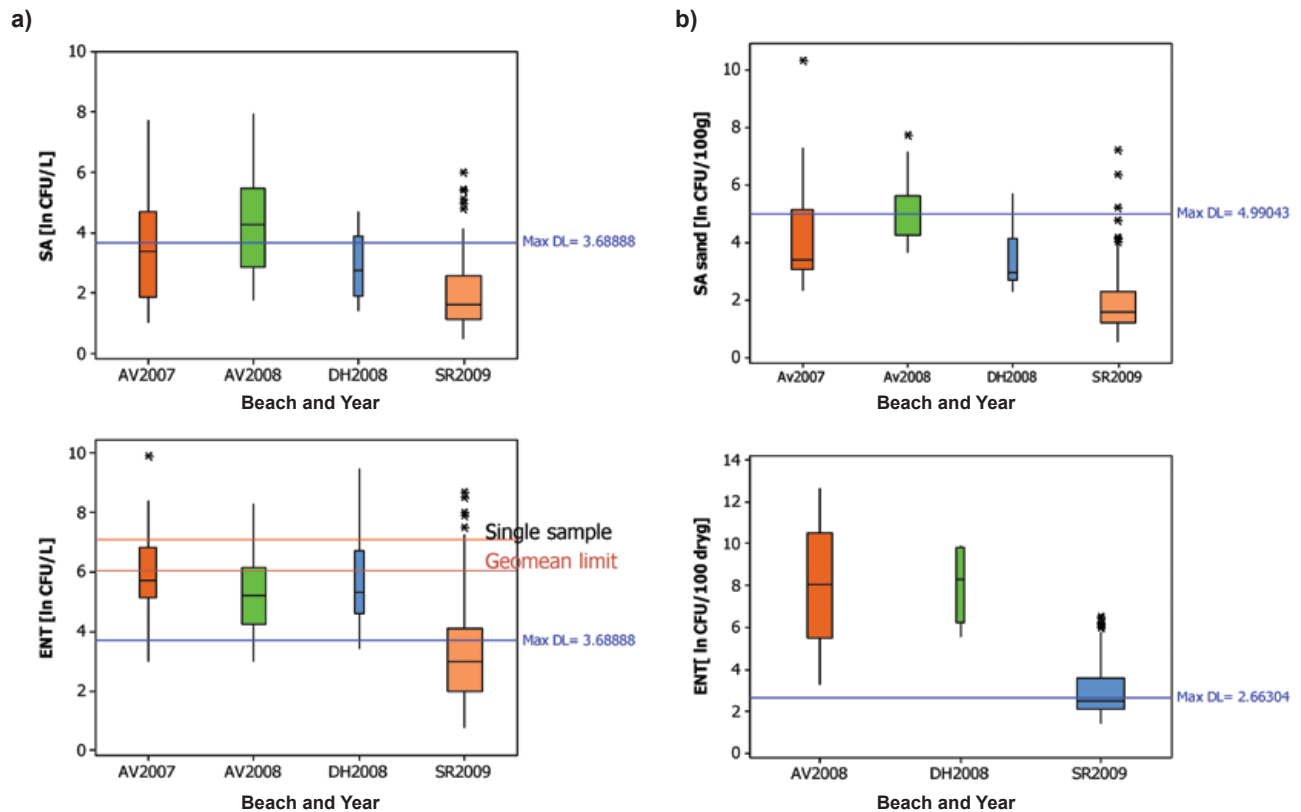


Figure 3. Box plots of *S. aureus* (SA) and enterococci (ENT) concentrations in seawater (A) and sand (B) generated by Kruskal-Wallis analysis ($\alpha = 0.05$) for samples collected from beach sites in Avalon during 2007 (AV2007) and 2008 (AV2008), Doheny in 2008 (DH2008), and Malibu Surfrider in 2009 (SR2009). Box width is proportional to sample size. Horizontal lines depict the maximum detection limit (Max DL) for the data. For enterococci in seawater, the EPA recreational water quality guidelines for a single sample and the geometric mean (Geomean limit) also are shown.

similar seawater concentrations (although site B was significantly lower than site D). Site A, with presumed septic influence, was not significantly different from any of the other sites. Within Avalon, the four beach sites (Figure 1) also were similar to one another (although Site B in 2008 was significantly higher than Site C in 2007). Overall, *S. aureus* at Avalon was significantly higher in 2008 than 2007 (7.5 versus 3.0 CFU/100 ml median concentration, $\alpha = 0.05$). Except for Site B in 2008, Site D was not lower than the other sites, even though Site D was envisioned as a control site because it was located in a different watershed with less commercial development adjacent to the beach (Figure 1). There was only one beach site sampled at Doheny beach, thus no site comparisons were possible.

Enterococci in Seawater

Enterococci concentrations are presented only for samples in which *S. aureus* analysis also was conducted. Enterococci were frequently detected in

seawater, with an average % detection frequency of 79% ($n = 331$) for the beaches combined (Table 1). For Avalon, the average % detection frequency for seawater at was 88% for both summers. At Malibu Surfrider, the average % detection frequency was 72%. Only eleven Doheny seawater samples had corresponding *S. aureus* data; all of them were positive for enterococci (100%). The mean concentration of enterococci in all the seawater samples estimated by Kaplan-Meier statistics with Efron bias correction was 42 CFU/100 ml and the median concentration was 6 CFU/100 ml, with data for individual beaches given in Table 1.

Kruskal-Wallis multiple comparisons tests ($\alpha = 0.05$) showed that the median seawater concentration of enterococci was significantly lower at Malibu compared to the other beaches (Figure 3). At Malibu, the median enterococci concentration at site A (with presumed septic influence) was significantly lower than sites B and E, but did not differ significantly from Site D. At Avalon, median seawater

concentrations of enterococci were not statistically different between 2008 and 2007, in contrast to *S. aureus*. At Avalon, the median enterococci concentration at Site A in 2008 was significantly lower than sites B and C in both 2007 and 2008, despite the fact that the sites were located close to one another (Figure 1).

S. aureus in Sand

S. aureus was frequently detected in beach sand, similar to that observed for seawater. The average % detection frequency was 53% (n = 358) for the combined beach data (Table 1). For Avalon, the average % detection frequency was 62% for both years combined. For Malibu Surfrider, the average % detection frequency was 46% for sand. Although only a few samples were successfully analyzed for Doheny beach (n = 11), the detection frequency was similar to that observed at the other beaches (45%). The mean concentration of *S. aureus* in the sand samples estimated by Kaplan-Meier statistics with Efron bias correction was 187 CFU/100 dry g and the median concentration was 7.7 CFU/ 100 dry g, with data for individual beaches given in Table 1.

Kruskal-Wallis multiple comparisons tests ($\alpha = 0.05$) showed that the median concentration of *S. aureus* in sand was lower at Malibu than at Avalon (Figure 3). Concentrations of *S. aureus* in sand were higher at Avalon in 2008 than in 2007, as was found for the seawater concentrations. No significant differences among individual beach sites were observed for Avalon or Malibu.

Enterococci in Sand.

Enterococci concentrations are presented only for those samples which also had collection for *S. aureus* analysis. The average % detection frequency was 71% (n = 238) for the combined beaches (Table 1). For Avalon (2008), the average % detection frequency was 94% (n = 49). Enterococci concentrations in terms of CFU/dry g sand were not available for Avalon in 2007. For Malibu Surfrider, the average % detection frequency was 63%. Only five Doheny sand samples had corresponding *S. aureus* data; all of them were positive for enterococci (100%). The mean concentration of enterococci in sand samples estimated by Kaplan-Meier statistics with Efron bias correction was 5,086 CFU/100 dry g and the median concentration was 13 CFU/100 dry g, with data for individual beaches given in Table 1.

Kruskal-Wallis multiple comparisons tests ($\alpha = 0.05$) showed that median concentration of enterococci in sand at Malibu was significantly lower than at the other beaches tested (Figure 3). No significant differences across beach sites were observed except that the median enterococci concentration in sand at Malibu (Figure 1) was significantly lower at Site E than Site B.

MRSA in Seawater and Sand

MRSA was found on occasion in seawater and sand at relatively low concentrations. Of the 12 beach sites tested, the overall % detection frequency was 1.6% (6/366) for seawater and 2.7% (10/366) for sand (Table 1). The % detection frequency varied by beach with Avalon having the highest frequency of detection for seawater (3.8%, 5/131) and sand (5.9%, 8/136). In contrast, the % detection frequency at Malibu was 0.4% (1/224) for seawater and 0.5% (1/221) for sand. No seawater samples were positive for MRSA at Doheny (n = 14) but 14% (1/7) were positive in the sand. Greater than 50% of the samples were nondetects; therefore, the concentration data are presented in terms of the 95% upper confidence limit (UCL; Helsel 2005) along with the range of concentrations observed (Table 1). The 95% UCL indicates that there was only a 5% chance of encountering a concentration higher than that given in Table 1.

Enterococci Concentrations Relative to S. aureus

Enterococci concentrations were higher than *S. aureus* in both seawater and sand. For seawater, the ratio of enterococci to *S. aureus* was fairly consistent across beaches and generally less than an order of magnitude. The median seawater concentration of enterococci was seven times higher than *S. aureus* for the combined beaches, ranging from three to six times higher for the individual beaches. For sand, the ratio of enterococci to *S. aureus* was more variable. The median sand concentration of enterococci was 2 times higher than *S. aureus* for the beaches combined, but the range across beaches was 2 to 159 times higher.

Relationships among *S. aureus*, Enterococci, and Non-Microbial Parameters

Simple Correlations and Simple Linear Regression

Kendall tau analysis and simple linear regression with life data were comparable and showed that *S.*

Table 2. Results of analyses by Kendall tau correlation and simple linear regression with life data, each calculated for one dependent (*S. aureus* concentration in seawater or sand) and one independent variable for the combined beach data. Coefficients are given from the Akritas-Theil-Sen (ATS) line of the Kendall tau analysis and from MLE (in parenthesis) for significant p-values ($\alpha = 0.01$). NS = not significant.

| Independent Variable | Dependent Variable Coefficient from ATS line (MLE) | |
|--|---|---|
| | SEAWATER: <i>S. aureus</i> (ln CFU/L) | SAND: <i>S. aureus</i> (ln CFU/100 dry g) |
| <i>S. aureus</i> sand (ln CFU/100 dry g) | 0.67 (0.63) ^b | -- |
| <i>S. aureus</i> seawater (ln CFU/L) | -- | 0.81 (0.72) |
| Water temperature (°C) | 0.66 (0.62) ^a | 0.68 (0.64) |
| Enterococci (ln CFU/L) | 0.49 (0.44) | 0.49 (0.59) |
| Surf height classification (m) | -1.4 (-1.4) | -0.94 (-2.0) |
| # swimmers (counted) | 0.046 (0.028) ^a | NS |
| # swimmers (reported) | NS | NS |
| Wind classification | NS ^c | -1.18 (-0.92) |
| Tide height (m) | NS ^c | NS ^c |
| Turbidity classification | NS ^c | NS ^c |
| Birds (#) | NS | NS |
| Dogs (#) | NS | NS |

^a Also correlated for Avalon (2007, 2008 combined) and Malibu beaches analyzed separately.

^b Also correlated for Malibu beach analyzed separately.

^c Significant at $\alpha = 0.05$.

aureus concentrations in seawater and in sand were correlated to a number of the analyzed variables (Table 2). *S. aureus* concentrations in seawater and sand were strongly correlated to each other (Table 2). Both seawater and sand concentrations were correlated to water temperature, the seawater concentration of enterococci, and surf height classification (inversely correlated). In addition, *S. aureus* in seawater (but not in sand) was significantly correlated with the number of swimmers as determined by observation at the time of collection. *S. aureus* concentrations were not correlated to the number of people having water contact as determined by questionnaire, although this was the parameter used in subsequent epidemiology analysis (Colford Jr. *et al.* 2012). *S. aureus* in sand (but not seawater) was inversely correlated to wind strength classification. Wind, tide height, and turbidity all became significant at $\alpha = 0.05$ (Table 2). Only water temperature and the number of swimmers were significantly correlated to the *S. aureus* concentration in seawater for both the combined beach data and for Avalon and Malibu

beaches analyzed separately (Table 2). Doheny beach was not analyzed separately due to the small sample size. Other significant correlations for individual beaches are given in Table 2.

Kendall tau analysis was useful for comparing concentrations of bacteria because it could account for nondetects in both variables and made no assumptions about distribution shape. For the combined beach data, the relationship between the *S. aureus* concentration in seawater and sand was described by the following ATS line: *S. aureus* (ln CFU/L) = 0.18 + 0.67 × *S. aureus* (ln CFU/100 dry g) (tau-b = 0.29, p < 0.001). With the concentration in sand as the dependent variable, the relationship was described by the following ATS line: *S. aureus* (ln CFU/100 dry g sand) = 0.053 + 0.81 × *S. aureus* (ln CFU/L) (tau-b = 0.29, p < 0.001). The relationship between the seawater concentrations of *S. aureus* and enterococci was described by the ATS line *S. aureus* (ln CFU/L) = 9.30 + 0.49 × enterococci (ln CFU/L seawater) (tau-b = 0.26, p < 0.001). The relationship between the sand concentrations of *S. aureus* and

enterococci in seawater was described by the ATS line $S. aureus$ (ln CFU/100 dry g sand) = $-0.0061 + 0.64 \times$ enterococci (ln CFU/L seawater) (tau-b = 0.27, $p < 0.001$).

For Malibu Surfrider beach, the seawater concentration of $S. aureus$ was weakly correlated to whether or not the outlet to the lagoon (Figure 1, Malibu Site C) was open (tau-b = 0.18, $p = 0.01$; open was coded as 0, therefore the relationship was inverse). There was no significant relationship between seawater enterococci concentration and lagoon flow, and there was no significant relationship between sand $S. aureus$ concentration and lagoon flow. Attempts to quantify $S. aureus$ in the lagoon water were unsuccessful due to overgrowth by non-target bacteria.

Although the focus of this study was $S. aureus$, a limited number of correlation analyses were performed with enterococci treated as the dependent variable. In addition to the correlation between enterococci and $S. aureus$ described above, the seawater concentration of enterococci was weakly correlated to water temperature for the combined beach data (tau-b = 0.18, $p < 0.001$). However, water temperature was not significantly correlated to enterococci for the individual beaches, in contrast to the findings for $S. aureus$. The concentration of enterococci was not correlated to the number of swimmers for any of the beaches. It is interesting to note that water temperature was significantly correlated to the number of swimmers for the combined beaches (tau-b = 0.25, $p < 0.001$) and for Avalon (tau-b = 0.35, $p < 0.001$) and Malibu (tau-b = 0.19, $p < 0.001$) analyzed separately. There was no significant difference in the number of swimmers between beaches (data not shown).

Multivariate and Multiple Linear Regression Analysis Results

Multivariate examination was performed on the combined beach data using principal component analysis. Principal component analysis was consistent with the results obtained by stepwise and best subset regression, and the best description by principal component analysis was obtained with the parameters $S. aureus$ seawater concentration, $S. aureus$ sand concentration, and water temperature (data not shown). Results were consistent with the analyses by Kendall-tau and simple linear regression with life data (MLE with one dependent and one independent variable; Table 2).

The best-fit for MLE analysis for $S. aureus$ in sand was obtained using multiple linear regression with life data assuming a lognormal distribution (Table 3; all coefficient p-values significant at $\alpha = 0.01$). For $S. aureus$ in seawater, the best-fit was obtained using multiple linear regression analysis with life data assuming a Weibull distribution (Table 3; all coefficient p-values significant at $\alpha = 0.01$, except # of swimmers at $\alpha = 0.03$). Variable inflation factors (VIF) revealed moderate co-linearity between $S. aureus$ concentrations in seawater, enterococci in seawater, $S. aureus$ in sand, and water temperature.

DISCUSSION

Of the many relationships identified by simple correlation (Table 1), some parameters repeatedly emerged as significant descriptive variables for $S. aureus$ in seawater regardless of analysis methods or approach for nondetects (censored vs. non-censored). These parameters were $S. aureus$ sand concentration, water temperature, the number of swimmers, and the enterococci seawater concentration. Of these parameters, water temperature appeared to be

Table 3. Best-fit multiple linear regression models (MLE with censored data) for $S. aureus$ in beach seawater and sand.

| Dependent Variable | MLE Model ^a |
|-------------------------------------|--|
| $S. aureus$ seawater (ln CFU/L) | $-4.6 + 0.58 \times S. aureus$ (ln CFU/100 dry g sand) + $0.22 \times$ water temperature ($^{\circ}\text{C}$) + $0.22 \times$ enterococci (ln CFU/L seawater) + $0.018 \times$ swimmers (# counted at time of sample collection) |
| $S. aureus$ sand (ln CFU/100 dry g) | $-6.9 + 0.45 \times S. aureus$ (ln CFU/L seawater) + $0.37 \times$ water temperature ($^{\circ}\text{C}$) + $0.24 \times$ enterococci (ln CFU/L seawater) + $-0.77 \times$ surf height classification (m) |

^a Assumed distribution for $S. aureus$: lognormal in sand, Weibull in seawater (result for shape parameter, $\beta = 0.56$).

particularly salient because it was correlated to *S. aureus* in both seawater and sand for both the combined data and for beaches analyzed individually (Avalon and Malibu). The only other correlation that held for both combined and individual beach data was the number of swimmers to *S. aureus* in seawater. In addition, the correlation between *S. aureus* concentrations in sand and in seawater held for both the combined data and for Malibu beach analyzed separately.

The correlation between the *S. aureus* concentration in sand to the concentrations of *S. aureus* and enterococci in seawater supports other studies that suggested beach sands can be a source of both fecal indicator bacteria and pathogens to adjacent waters (Lee *et al.* 2006, Bonilla *et al.* 2007, Yamahara *et al.* 2007, Yamahara *et al.* 2009, Goodwin *et al.* 2009, Halliday and Gast 2011, Sabinro *et al.* 2011, Zhu *et al.* 2011, Shah *et al.* 2011). Furthermore, studies have implicated sand itself as an important vehicle for human exposure (Whitman *et al.* 2009) and epidemiology studies indicated that sand can pose a health risk (Bonilla *et al.* 2007; Heaney *et al.* 2009, 2012). In contrast to correlations seen between pathogens and indicators in some studies, other studies have found *S. aureus* to not be correlated to a variety of other indicators (El-Shenawy 2005), including enterococci (Calderon *et al.* 1991, Selvakumar and Borst 2006, Yamahara *et al.* 2012, Enns *et al.* 2012). The study here comprised a relatively large data set and days of sampling which may have allowed more patterns to emerge (Table 1). A common sand reservoir for both *S. aureus* and enterococci perhaps could explain the correlations seen here; however, it should be noted that the correlation existed only for the data combined across beaches but not for the beaches analyzed individually.

The positive correlation of water temperature to *S. aureus* concentrations in sand and seawater supports the concern that pathogens may grow and/or persist in the environment with sand as a source to adjacent waters, analogous to the case for FIB (Beverdorf *et al.* 2007, Shah *et al.* 2011, Phillips *et al.* 2012). In support of this suggestion, other studies have shown that *S. aureus* and MRSA can survive for days in river and seawater, with better survival in seawater because of a preference for higher salinity (Gabutti *et al.* 2000, Tolba *et al.* 2008, Levin-Edens *et al.* 2011). Both methicillin sensitive *S. aureus* (MSSA) and MRSA can survive on environmental

surfaces and are resistant to desiccation (Cimolai 2008). In addition, the ability for *S. aureus* to be resuscitated from a viable but non-culturable (VBNC) state has been demonstrated (Masmoudi *et al.* 2010); therefore, survival in sand and seawater appears plausible. Potential to transfer virulence and antibiotic resistance genes also is a concern, particularly if genes may be obtained from wounded or dead organisms contained in treated wastewater (Börjesson *et al.* 2009, 2010; Goldstein 2010).

Compared to this study (Table 1), similar detection frequencies for *S. aureus* and MRSA in seawater (37 and 1%, respectively; Sinigalliano *et al.* 2010) and similar median concentrations (Shah *et al.* 2011) were reported for a subtropical beach using a substantially smaller data set. During a ten-day intensive study of this same beach, the detection frequency for *S. aureus* in knee-deep seawater was 19% and the detection frequency in sand ranged from 0.42 to 10%, depending on the sampling location (Enns *et al.* 2012). Compared to this study, similar MRSA but lower *S. aureus* prevalence in sand was observed for a survey of 37 beaches along the entire California coast (prevalence by beach: 13.5% *S. aureus*, 3% MRSA; Yamahara *et al.* 2012, prevalence by sample: 8.5% *S. aureus*, 1.7% MRSA; Goodwin unpublished results). Both the California beach survey and this study used the same methodology, but the beach survey investigated only dry sand and included beaches with few visitors (Yamahara *et al.* 2012); whereas the collections here were all moist sand from beaches with high visitor numbers. *S. aureus* prevalence in freshwater coastal streams in O‘ahu, Hawaii (86%, 19/22; Viau *et al.* 2011) was higher than that observed here, with similar concentrations (below detection: 5.2 CFU/100 ml for the December sampling; Goodwin unpublished results).

It should be noted that the concentrations here are expected to be biased low despite the positive performance of SCA and C-MRSA with beach water and sand samples (Goodwin and Pobuda 2009) because the performance only applies to countable plates. In this study, it was often the case that no data was obtained from samples of the poorest water quality because plates were overgrown by non-target microbes. Furthermore, it appeared that *S. aureus* could be outcompeted on the plates by non-target organisms because sometimes it could be identified on less crowded filters but not on more crowded filters that had received a higher volume of water.

Therefore, the concentration estimates reported here should be considered conservative.

It should be helpful to view the potential risk from *S. aureus* and MRSA via beach exposure in context with other exposure routes, such as fomites or food products (Scott *et al.* 1982, 2008, 2009; Lindenmayer *et al.* 1998, Miller *et al.* 2009; Waters *et al.* 2011). To enable comparison, the concentrations given here can be converted to CFU per area using the specific surface area of coarse sand (~0.01 m²/g; Yerima and Ranst 2005), resulting in equivalent concentrations for units in CFU/dry g and CFU/m². Given that the typical detection limit for *S. aureus* in sand was 3.03 CFU/100 dry g, the frequency of detection for 25 cm² samples would drop from 53 to 42%, which is comparable to that reported in homes by Scott *et al.* (1982; to express Table 1 sand concentrations in units of CFU/25 cm², divide values by 400).

Ultimately, the significance of *S. aureus* and MRSA prevalence and concentration in the environment depends on the infectious dose (Shibata and Solo-Gabriele 2012) for both ingestion and, importantly, wound inoculation, particularly under real-world conditions (e.g., multiple organisms and particles contaminating the wound). One study of *S. aureus* surface inoculation of intact human skin found an ED₅₀ of 10³/cm², with an inoculation of 40/cm² causing infection in 20% of subjects; growth of the organisms after inoculation was necessary to cause infection (Singh *et al.* 1971, Rose and Haas 1999). The ability for *S. aureus* to infect intact skin appeared dependent on a variety of parameters, including initial dose, maintained moisture of the skin surface, and competition with indigenous flora. An inoculation dose lower than 40/cm² was not tested; however, this dose was almost 1000 times higher than the highest concentration in sand observed here (using the conversion discussed above). However, the infectious dose of *S. aureus* is substantially reduced by factors such as foreign bodies or synergy with other contaminating microbes (Elek 1956, Schaad 1983, Brook *et al.* 1984, Rissing *et al.* 1987, Hendricks *et al.* 2001). Both of these modifying conditions could be expected in beach settings, particularly for contamination of a wound with sand. Therefore, obtaining a more accurate assessment of infectious dose under a variety of real-world conditions is an important area for future research. In any case, based on human studies (Singh

et al. 1971), rinsing and drying the skin should help provide protection, particularly for intact skin.

LITERATURE CITED

- Ahtainen, J., M. Niemi and H.J Jousimies-Somer. 1991. *Staphylococci* in polluted waters and in waters of uninhabited areas. *Water Science and Technology* 24:103-108.
- Al-Zu'Bi, E., S. Bdur and A.A. Shehabi. 2004. Antibiotic resistance patterns of mecA-positive *Staphylococcus aureus* isolates from clinical specimens and nasal carriage. *Microbial Drug Resistance* 10:321-324.
- Baba, T. 2002. Genome and virulence determinants of high virulence community-acquired MRSA. *Lancet* 359:1819-1827.
- Baptiste, K.E., K. Williams, N.J. Williams, A. Wattret, P.D. Clegg, S. Dawson, J.E. Corkill, T. O'Neill and C.A. Hart. 2009. Methicillin-resistant *Staphylococci* in companion animals. *Emerging Infectious Diseases* 11:1942-1944.
- Beversdorf, L.J., S.M. Bornstein-Forst and S.L. McLellan. 2007. The potential for beach sand to serve as a reservoir for *Escherichia coli* and the physical influences on cell die-off. *Journal of Applied Microbiology* 102:1372-1381.
- Bonilla, T.D., K. Nowosielski, M. Cuvelier, A. Hertz, M. Green, N. Esiobu, D.S. McCorquodale, J.M. Fleisher and A. Rogerson. 2007. Prevalence and distribution of fecal indicator organisms in south Florida beach sand and preliminary assessment of health effects associated with beach sand exposure. *Marine Pollution Bulletin* 54:1472-1482.
- Börjesson, S., A. Matussek, S. Melin, S. Löfgren and P.E. Lindgren. 2010. Methicillin-resistant *Staphylococcus aureus* (MRSA) in municipal wastewater: an uncharted threat? *Journal of Applied Microbiology* 108:1244-1251.
- Börjesson, S., S. Melin, A. Matussek and P.E. Lindgren. 2009. A seasonal study of the mecA gene and *Staphylococcus aureus* including methicillin-resistant *S. aureus* in a municipal wastewater treatment plant. *Water Research* 43:925-932.
- Brook, I., V. Hunter and R.I. Walker. 1984. Synergistic effect of bacteroides, clostridium, fusobacterium, anaerobic cocci, and aerobic bacteria on

- mortality and induction of subcutaneous abscesses in mice. *Journal of Infectious Diseases* 149:924-928.
- Calderon, R.L., E.W. Mood and A.P. Dufour. 1991. Health effects of swimmers and nonpoint sources of contaminated waters. *International Journal of Environmental Health Research* 1:21-31.
- Chambers, H.F. 2001. The changing epidemiology of *Staphylococcus aureus*? *Emerging Infectious Diseases* 7:178-182.
- Charoenca, N. and R. Fujioka. 1995. Association of *Staphylococcal* skin infections and swimming. *Water Science and Technology* 31:11-17.
- Cheung, W.H., K.C. Chang, R.P. Hung and J.W. Kleevens. 1990. Health effects of beach water pollution in Hong Kong. *Epidemiology and Infection* 105:139-162.
- Cimolai, N. 2008. MRSA and the environment: implications for comprehensive control measures. *European Journal of Clinical Microbiology and Infectious Diseases* 27:481-493.
- Colford, Jr., J.M., K.C. Schiff, J.F. Griffith, V. Yau, B.F. Arnold, C.C. Wright, J.S. Gruber, T.J. Wade, S. Burns, J. Hayes, C.D. McGee, M. Gold, Y. Cao, R.T. Noble, R. Haugland and S.B. Weisberg. 2012. Using rapid indicators for *Enterococcus* to assess the risk of illness after exposure to urban runoff contaminated marine water. *Water Research* 46:2176-2186.
- Converse, R.R., J.F. Griffith, R.T. Noble, R.A. Haugland, K.C. Schiff and S.B. Weisberg. 2012. Correlation between quantitative polymerase chain reaction and culture-based methods from measuring *Enterococcus* over various temporal scales and three California marine beaches. *Applied and Environmental Microbiology* 78:1237-1242.
- Dorman, M. and N. Stoner. 2007. Testing the waters: a guide to water quality at vacation beaches. seventeenth edition. Natural Resources Defense Council. New York, NY.
- Dwight, R.H., L.M. Fernandez, D.B. Baker, J.C. Semenza and B.H. Olson. 2005. Estimating the economic burden from illnesses associated with recreational coastal water pollution - a case study in Orange County, California. *Journal of Environmental Management* 76:95-103.
- Eguia, J.M. and H.F. Chambers. 2004. Community-acquired methicillin-resistant *Staphylococcus aureus*: epidemiology and potential virulence factors. *Current Infectious Disease Reports* 5:459-466.
- Elek, S.D. 1956. Experimental *Staphylococcal* infections in the skin of man. *Annals of the New York Academy of Sciences* 65:85-90.
- Elmir, S.M., M.E. Wright, A. Abdelzaher, H.M. Solo-Gabriele, L.E. Fleming, G. Miller, M. Rybolowik, M.T. Peter Shih, S.P. Pillai, J.A. Cooper and E.A. Quaye. 2007. Quantitative evaluation of bacteria released by bathers in a marine water. *Water Research* 41:3-10.
- El-Shenawy, M.A. 2005. *Staphylococcus aureus* and fecal indicators in Egyptian coastal waters of Aqaba Gulf, Suez Gulf, and Red Sea. *Egyptian Journal of Aquatic Research* 31:113-124.
- Enns, A.A., L.J. Vogel, A.M. Abdelzaher, H.M. Solo-Gabriele, L.R.W. Plano, M.L. Gidley, M.C. Phillips, J.S. Klaus, A.M. Piggot, Z. Feng, A.J.H.M. Reniers, B.K. Haus, S.M. Elmir, Y. Zhang, N.H. Jimenez, N. Abdel-Mottaleb, M.E. Schoor, A. Brown, S.Q. Khan, A.S. Dameron, N.C. Salazar and L.E. Fleming. 2012. Spatial and temporal variation in indicator microbe sampling is influential in beach management decisions. *Water Research* 46:2237-2246.
- Gabutti, G., A. De Donno, F. Bagordo and M.T. Montagna. 2000. Comparative survival of faecal and human contaminants and use of *Staphylococcus aureus* as an effective indicator of human pollution. *Marine Pollution Bulletin* 40:697-700.
- Goldstein, R.E. 2010. Evaluation of antibiotic-resistant bacteria in tertiary treated wastewater, reclaimed wastewater used for spray irrigation, and resulting occupational exposures. Master of Public Health, University of Maryland. College Park, MD.
- Goodwin, K.D. and M. Pobuda. 2009. Performance of CHROMagar™ *Staph aureus* and CHROMagar™ MRSA for detection of *Staphylococcus aureus* in beach water and sand - comparison of culture, agglutination, and molecular analyses. *Water Research* 43:4802-4811.
- Goodwin, K.D., L. Matragrano, D. Wanless, C. Sinigalliano and M.J. LaGier. 2009. A preliminary investigation of fecal indicator bacteria, human pathogens, and source tracking markers in beach

- water and sand. *Environmental Research Journal* 2:395-417.
- Gorwitz, R.J. 2008. A review of community-associated methicillin-resistant *Staphylococcus aureus* skin and soft tissue infections. *The Pediatric Infectious Disease Journal* 27:1-7.
- Halliday, E. and R.J. Gast. 2011. Bacteria in beach sands: an emerging challenge in protecting coastal water quality and bather health. *Environmental Science and Technology* 45:370-379.
- Hanes, N.B. and A.J. Fossa. 1970. A qualitative analysis of the effects of bathers in recreational water quality. *Advances in Water Pollution Research* 5:1-9.
- Hartz, A., M. Cuvelier, K. Nowosielski, T.D. Bonilla, M. Green, N. Esiobu, D.S. McCorquodale and A. Rogerson. 2010. Survival potential of *Escherichia coli* and *Enterococci* in subtropical beach sand: implications for water quality managers. *Journal of Environmental Quality* 37:898-905.
- Heaney, C.D., E. Sams, S. Wing, S. Marshall, K. Brenner, A.P. Dufour and T.J. Wade. 2009. Contact with beach sand among beachgoers and risk of illness. *American Journal of Epidemiology* 170:164-172.
- Heaney, C.D., E. Sams, A.P. Dufour, K.P. Brenner, R.A. Haugland, E. Chern, S. Wing, S. Marshall, D.C. Love, M. Serre, R. Noble and T.J. Wade. 2012. Fecal indicators in sand, sand contact, and risk of enteric illness among beachgoers. *Epidemiology* 23:95-106.
- Helsel, D.R. 2005. Nondetects and Data Analysis: Statistics for Censored Environmental Data. Wiley-Interscience. New York, NY.
- Helsel, D. 2010. Much ado about next to nothing: incorporating nondetects in science. *Annals of Occupational Hygiene* 54:257-262.
- Hendricks, K.J., T.A. Burd, J.O. Anglen, A.W. Simpson, G.D. Christensen and B.J. Gainor. 2001. Synergy between *Staphylococcus aureus* and *Pseudomonas aeruginosa* in a rat model of complex orthopaedic wounds. *Journal of Bone and Joint Surgery* 83:855-861.
- Jarvis, W.R., J. Schlosser, R.Y. Chinn, S. Tweeten and M. Jackson. 2007. National prevalence of methicillin-resistant *Staphylococcus aureus* in inpatients at US health care facilities, 2006. *American Journal of Infection Control* 35:631-637.
- Kluytmans, J.A. and H.F. Wertheim. 2005. Nasal carriage of *Staphylococcus aureus* and prevention of nosocomial infections. *Infection* 33:3-8.
- Kuehnert, M.J., H.A. Hill, B.A. Kupronis, J.I. Tokars, S.L. Solomon and D.B. Jernigan. 2005. Methicillin-resistant-*Staphylococcus aureus* hospitalizations, United States. *Emerging Infectious Diseases* 6:868-872.
- Kuehnert, M.J., D. Kruszon-Moran, H.A. Hill, G. McQuillan, S.K. McAllister, G. Fosheim, L.K. McDougal, J. Chaitram, B. Jensen, S.K. Fridkin, G. Killgore and F.C. Tenover. 2006. Prevalence of *Staphylococcus aureus* nasal colonization in the United States, 2001-2002. *Journal of Infectious Disease* 193:169-171.
- Lee, C.M., T.Y. Lin, C.C. Lin, G.A. Kohbodi, A. Bhatt, R. Lee and J.A. Jay. 2006. Persistence of fecal indicator bacteria in Santa Monica Bay beach sediments. *Water Research* 40:2593-2602.
- Levin-Edens, E., N. Bonilla, J.S. Meschke and M.C. Roberts. 2011. Survival of environmental and clinical strains of methicillin-resistant *Staphylococcus aureus* (MRSA) in marine and fresh waters. *Water Research* 45:5681-5686.
- Lindenmayer, J.M., S. Schoenfeld, R. O'Grady and J.K. Carney. 1998. Methicillin-resistant *Staphylococcus aureus* in a high school wrestling team and the surrounding community. *Archives of Internal Medicine* 158:895-899.
- Malik, S., H. Peng and M.D. Barton. 2006. Partial nucleotide sequencing of the *mecA* genes of *Staphylococcus aureus* isolates from cats and dogs. *Journal of Clinical Microbiology* 44:413-416.
- Martinez, J.L. 2009. The role of natural environments in the evolution of resistance traits in pathogenic bacteria. *Proceedings of the Royal Society Biological Sciences* 276:2521-2530.
- Masmoudi, S., M. Denis and S. Maalej. 2010. Inactivation of the gene *katA* or *sodA* affects the transient entry into the viable but non-culturable response of *Staphylococcus aureus* in natural seawater at low temperature. *Marine Pollution Bulletin* 60:2209-2214.

- Mason, W.J., J.S. Blevins, K. Beenken, N. Wibowo, N. Ojha and M.S. Smeltzer. 2001. Multiplex PCR protocol for the diagnosis of *Staphylococcal* infection. *Journal of Clinical Microbiology* 39:3332-3338.
- Miller, M., H.A. Cook, E.Y. Furuya, M. Bhat, M.H. Lee, P. Vavagiakis, P. Visintainer, G. Vasquez, E. Larson and F.D. Lowy. 2009. *Staphylococcus aureus* in the community: colonization versus infection. *PLoS ONE* 4:e6708.
- Moran, G.J., R.N. Amii, F.M. Abrahamian and D.A. Talan. 2005. Methicillin-resistant *Staphylococcus aureus* in community-acquired skin infections. *Emerging Infectious Diseases* 11:928-930.
- Mulvey, M.R., L. MacDougall, B. Cholin, G. Horsman, M. Fidyk, S. Woods and Saskatchewan CA-MRSA Study Group. 2005. Community-associated methicillin-resistant *Staphylococcus aureus*, Canada. *Emerging Infectious Diseases* 11:844-850.
- Nuttall, T., N. Williams, R. Saunders and S. Dawson. 2008. Methicillin-resistant *Staphylococci* in companion animals. *European Journal of Companion Animal Practice* 18:280-282.
- Papadakis, J.A., A. Mavridou, S.C. Richardson, M. Lampiri and U. Marcelou. 1997. Bather-related microbial and yeast populations in sand and seawater. *Water Research* 31:799-804.
- Phillips, M.C., H.M. Solo-Gabriele, A.M. Piggot, J.S. Klaus and Y. Zhang. 2011. Relationships between sand and water quality at recreational beaches. *Water Research* 45:6763-6769.
- Plano, L.R., A.C. Garza, T. Shibata, S.M. Elmier, J. Kish, C.D. Sinigalliano, M.L. Gidley, G. Miller, K. Withum, L.E. Fleming and H.M. Solo-Gabriele. 2011. Shedding of *Staphylococcus aureus* and methicillin-resistant *Staphylococcus aureus* from adult and pediatric bathers in marine waters. *BMC Microbiology* 11:5.
- Ralston, E.P., H. Kite-Powell and A. Beet. 2011. An estimate of the cost of acute health effects from food- and water-borne marine pathogens and toxins in the United States. *Journal of Water and Health* 9:680-694.
- Rissing, J.P., T.B. Buxton, J.A. Horner, R.K. Shockley, J.F. Fisher and R. Harris. 1987. Synergism between *Bacteroides fragilis* and *Staphylococcus aureus* in experimental tibial osteomyelitis. *Journal of Laboratory and Clinical Medicine* 110:433-438.
- Robinton, E.D. and E.W. Mood. 1966. A quantitative and qualitative appraisal of microbial pollution of water by swimmers a preliminary report. *Journal of Hygiene (Cambridge)* 64:489-499.
- Rose, J.B. and C.N. Haas. 1999. A risk assessment framework for the evaluation of skin infections and the potential impact of antibacterial soap washing. *American Journal of Infection Control* 27:S26-S33.
- Rusin, P.A., S.L. Maxwell, J.P. Brooks, C.P. Gerba and I.L. Pepper. 2003. Evidence for the absence of *Staphylococcus aureus* in land applied biosolids. *Environmental Science and Technology* 37:4027-4030.
- Sabinro, R., C. Verissimo, M.A. Cunha, B. Wergikoski, F.C. Ferreira, R. Rodrigues, H. Parada, L. Falcão, L. Rosado, C. Pinheiro, E. Paixão and J. Brandão. 2011. Pathogenic fungi: an unacknowledged risk at coastal resorts? New insights on microbiological sand quality in Portugal. *Marine Pollution Bulletin* 62:1506-1511.
- Schaad, U.B. 1983. Which number of infecting bacteria is of clinical relevance? *Infection* 11:S87-S89.
- Scott, E., S.F. Bloomfield and C.G. Barlow. 1982. An investigation of microbial contamination in the home. *The Journal of Hygiene* 89:279-293.
- Scott, E., S. Duty and M. Callahan. 2008. A pilot study to isolate *Staphylococcus aureus* and methicillin-resistant *S aureus* from environmental surfaces in the home. *American Journal of Infection Control* 36:458-460.
- Scott, E., S. Duty and K. McCue. 2009. A critical evaluation of methicillin-resistant *Staphylococcus aureus* and other bacteria of medical interest on commonly touched household surfaces in relation to household demographics. *American Journal of Infection Control* 37:447-453.
- Selvakumar, A. and M. Borst. 2006. Variation of microorganism concentrations in urban stormwater runoff with land use and seasons. *Journal of Water and Health* 4:109-124.

- Seyfried, P.L., R.S. Tobin, N.E. Brown and P.F. Ness. 1985. A prospective study of swimming-related illness. II. Morbidity and the microbiological quality of water. *American Journal of Public Health* 75:1071-1075.
- Shah, A.H., A.M. Abdelzaher, M. Phillips, R. Hernandez, H.M. Solo-Gabriele, J. Kish, G. Scorzetti, J.W. Fell, M.R. Diaz, T.M. Scott, J. Lukasik, V.J. Harwood, S. McQuaig, C.D. Sinigalliano, M.L. Gidley, D. Wanless, A. Ager, J. Lui, J.R. Stewart, L.R. Plano and L.E. Fleming. 2011. Indicator microbes correlate with pathogenic bacteria, yeasts and helminthes in sand at a subtropical recreational beach site. *Journal of Applied Microbiology* 110:1571-1583.
- Shannon, K.E., D.-Y. Lee, J.T. Trevors and L.A. Beaudette. 2007. Application of real-time quantitative PCR for the detection of selected bacterial pathogens during municipal wastewater treatment. *Science of the Total Environment* 382:121-129.
- Shibata, T. and H.M. Solo-Gabriele. 2012. Quantitative microbial risk assessment of human illness from exposure to marine beach sand. *Environmental Science and Technology* 46:2799-2805.
- Shuval, H. 2003. Estimating the global burden of thalassogenic diseases: human infectious diseases caused by wastewater pollution of the marine environment. *Journal of Water and Health* 1:53-64.
- Singh, G., R.R. Marples and A.M. Kligman, 1971. Experimental *Staphylococcus aureus* infection in humans. *The Journal of Investigative Dermatology* 57:149-162.
- Sinigalliano, C.D., J.M. Fleisher, M.L. Gidley, H.M. Solo-Gabriele, T. Shibata, L.R.W. Plano, S.M. Elmira, D. Wanless, J. Bartkowiak, R. Boiteau, K. Withum, A.M. Abdelzaher, G. He, C. Ortega, X. Zhu, M.E. Wright, J. Kish, J. Hollenbeck, T. Scott, L.C. Backer and L.E. Fleming. 2010. Traditional and molecular analyses for fecal indicator bacteria in non-point source subtropical recreational marine waters. *Water Research* 44:3763-3772.
- Smith, B.G. and A.P. Dufour. 1993. Effects of the microbiological quality of recreational waters: a simulation study. Proceeding for the American Society for Microbiology 93rd General Meeting. Atlanta, GA.
- Soge, O.O., J.S. Meschke, D.B. No and M.C. Roberts. 2009. Characterization of methicillin-resistant *Staphylococcus aureus* and methicillin-resistant coagulase-negative *Staphylococcus* spp. isolated from US West Coast public marine beaches. *Journal of Antimicrobial Chemotherapy* 64:1148-1155.
- Tolba, O., A. Loughrey, C.E. Goldsmith, B.C. Millar, P.J. Rooney and J.E. Moore. 2008. Survival of epidemic strains of healthcare (HAMRSA) and community-associated (CA-MRSA) methicillin resistant *Staphylococcus aureus* (MRSA) in river-, sea- and swimming pool water. *International Journal of Hygiene and Environmental Health* 211:398-402.
- United States Environmental Protection Agency (USEPA). 2004. Water quality standards for coastal and Great Lakes recreation waters; Final Rule. Federal Register V69, No. 220 40 CFR Part 131, 67218-67243. <https://www.federalregister.gov/articles/2004/07/09/04-15614/water-quality-standards-for-coastal-and-great-lakes-recreation-waters>.
- Viau, E.J., K.D. Goodwin, K.M. Yamahara, B.A. Layton, L.M. Sassoubre, S.L. Burns, H.I. Tong, S.H. Wong and A.B. Boehm. 2011. Bacterial pathogens in Hawaiian coastal streams-associations with fecal indicators, land cover, and water quality. *Water Research* 45:3279-3290.
- Volkman, H., T. Schwartz, P. Bischoff, S. Kirchen and U. Obst. 2004. Detection of clinically relevant antibiotic-resistance genes in municipal wastewater using real-time PCR (TaqMan). *Journal of Microbiological Methods* 56:277-286.
- Waters, A.E., T. Contente-Cuomo, J. Buchhagen, C.M. Liu, L. Watson, K. Pearce, J.T. Foster, J. Bowers, W.E.M. Driebe, D.M. Engelthaler, P.S. Keim and C.J. Price. 2011. Multidrug-resistant *Staphylococcus aureus* in US meat and poultry. *Clinical Infectious Diseases* 52:1-4.
- Weese, J.S., H. Dick, B.W. Willey, A. McGee, B.N. Kreiswirth, B. Innis and D.E. Low. 2006. Suspected transmission of methicillin-resistant *Staphylococcus aureus* between domestic pets and humans in veterinary clinics and in the household. *Veterinary Microbiology* 115:149-155.
- Whitman, R.L., K. Przybyla-Kelly, D.A. Shively, M.B. Nevers and M.N. Byappanahalli. 2009. Hand-mouth transfer and potential for exposure to *E. coli*

and F+ coliphage in beach sand, Chicago, Illinois. *Journal of Water and Health* 7:623-629.

World Health Organization (WHO). 2003. Guidelines for safe recreational water environments. Volume 1, coastal and fresh waters. Geneva, Switzerland.

Wright, M.E., H.M. Solo-Gabriele, S. Elmir and L.E. Fleming. 2009. Microbial load from animal feces at a recreational beach. *Marine Pollution Bulletin* 58:1649-1656.

Yamahara, K.M., B.A. Layton, A.E. Santoro and A.B. Boehm. 2007. Beach sands along the California coast are diffuse sources of fecal bacteria to coastal waters. *Environmental Science and Technology* 41:4515-4521.

Yamahara, K.M., S.P. Walters and A.B. Boehm. 2009. Growth of *Enterococci* in unaltered, unseeded beach sands subjected to tidal wetting. *Applied and Environmental Microbiology* 75:1517-1524.

Yamahara, K.M., L.M. Sassoubre, K.D. Goodwin and A.B. Boehm. 2012. Occurrence and persistence of human pathogens and indicator organisms in beach sands along the California coast. *Applied and Environmental Microbiology* 78:1733-1745.

Yau, V., T.J. Wade, C.K. de Wilde and J.M. Colford Jr. 2009. Skin-related symptoms following exposure to recreational water: a systematic review and meta-analysis. *Water Quality Exposure and Health* 1:79-103.

Yerima, B.P. and E.V. Rans. 2005. Chemical properties of soils. pp 186-237 in: B.P.K. Yerima and E.V. Rans (eds.), *Introduction to Soil Science: Soils of the Tropics*. Trafford Publishing. Victoria, BC, Canada.

Zetola, N., J.S. Francis, E.L. Nuermberger and W.R. Bishai. 2005. Community-acquired methicillin-resistant *Staphylococcus aureus*: an emerging threat. *Lancet Infectious Disease* 5:275-286.

Zhang, L., D. Kinkelaar, Y. Huang, Y. Li, X. Li and H.H. Wang. 2011. Acquired antibiotic resistance: are we born with it? *Applied and Environmental Microbiology* 77:7134-7141.

Zhu, X., J.D. Wang, H.M. Solo-Gabriele and L.E. Fleming. 2011. A water quality modeling study of

non-point sources at recreational marine beaches. *Water Research* 45:2985-2995.

ACKNOWLEDGEMENTS

We thank the many volunteers and workers of the Pacific Coast Water Study and the laboratory of Dr. Jenny Jay, UCLA, for analysis of enterococci in sand. This research was carried out in part under the auspices of the Cooperative Institute for Marine and Atmospheric Studies (CIMAS), a joint institute of the University of Miami and the National Oceanic and Atmospheric Administration, cooperative agreement #NA17RJ1226.