

Southern California Bight



2008  
Regional Monitoring Program

# **Regional Monitoring Provides Value**

---

- **Regional reference condition**
- **Context for assessing impact**
- **Training and expertise**
- **Standardization and quality assurance**
- **Assessment tool development**
- **Opportunity for non-permit exploration**
- **Interaction with regulatory/regulated counterparts**
- **Scientific consensus**

# Regional Marine Monitoring Is Growing and Evolving

---

- **Four marine surveys thus far**
  - 1994, 1998, 2003, 2008
- **Consistently increasing participation**
  - Collaborating agencies has grown from 12 to >100
- **Steadily expanding focus**
  - Questions to answer
  - Habitats assessed
  - Measurements taken

# **Bight'08 Monitoring Elements**

---

- **Coastal ecology**
- **Water quality**
- **Shoreline microbiology**
- **Wetland eutrophication**
- **Rocky reef**
- **Area of Special Biological Significance**

# Coastal Ecology Synthesis

---

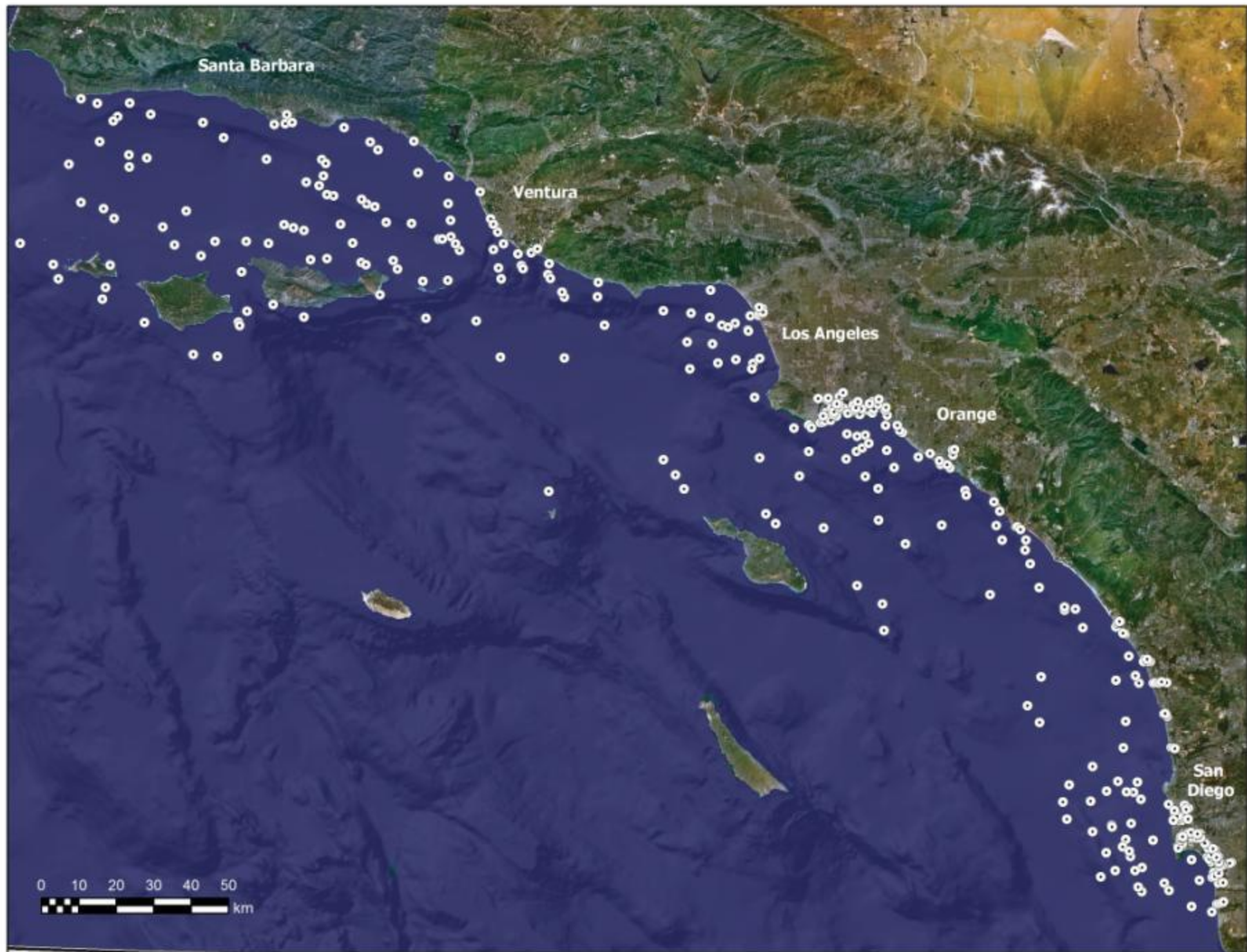
- 99% of the Bight is considered unimpacted
- Where impacts occur, they are disproportionately found in embayments
  - estuaries and marinas
- Embayments are improving over last decade
- Emerging contaminants may be important future issues

# Bight '08 Coastal Ecology Measurements

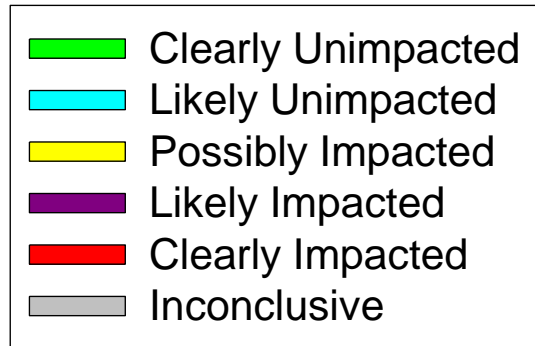
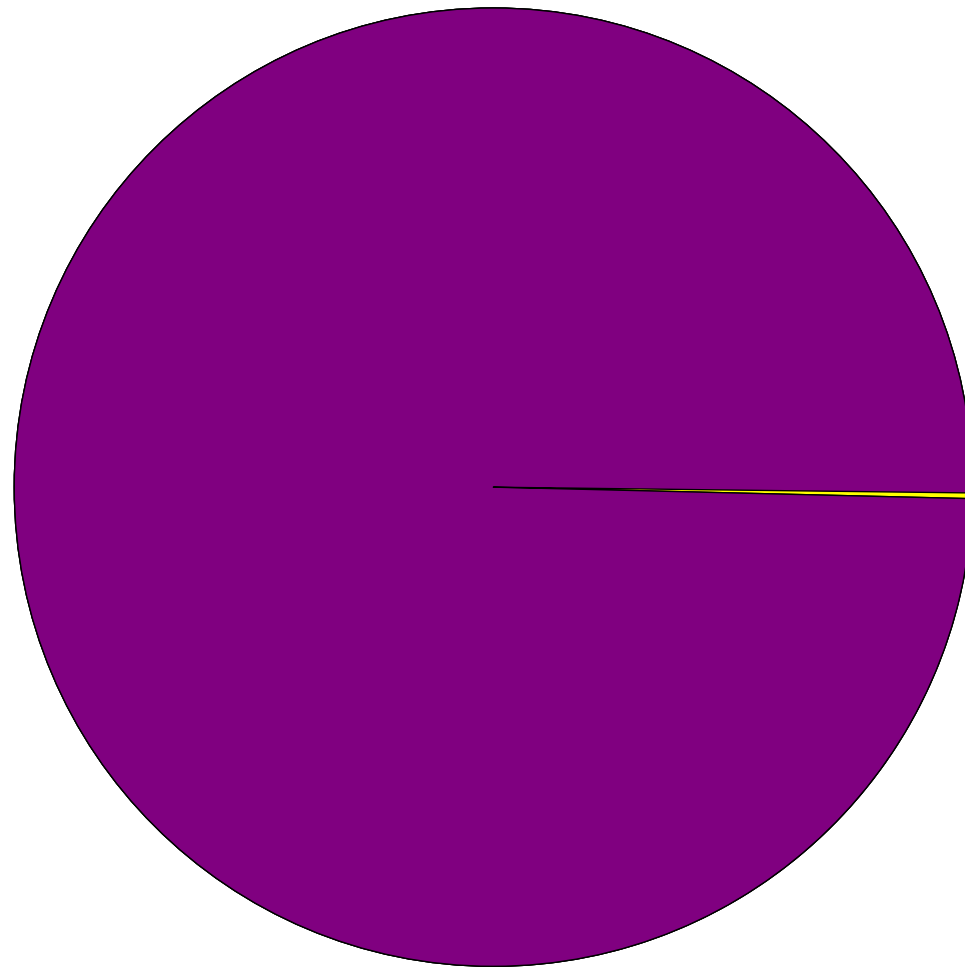
---

- 380 sites from Pt Conception to the US/Mexico Border
- Sediment Chemistry
- Sediment Toxicity
- Benthic (=sea bottom) invertebrates
- Put them all together for a multiple line of evidence assessment

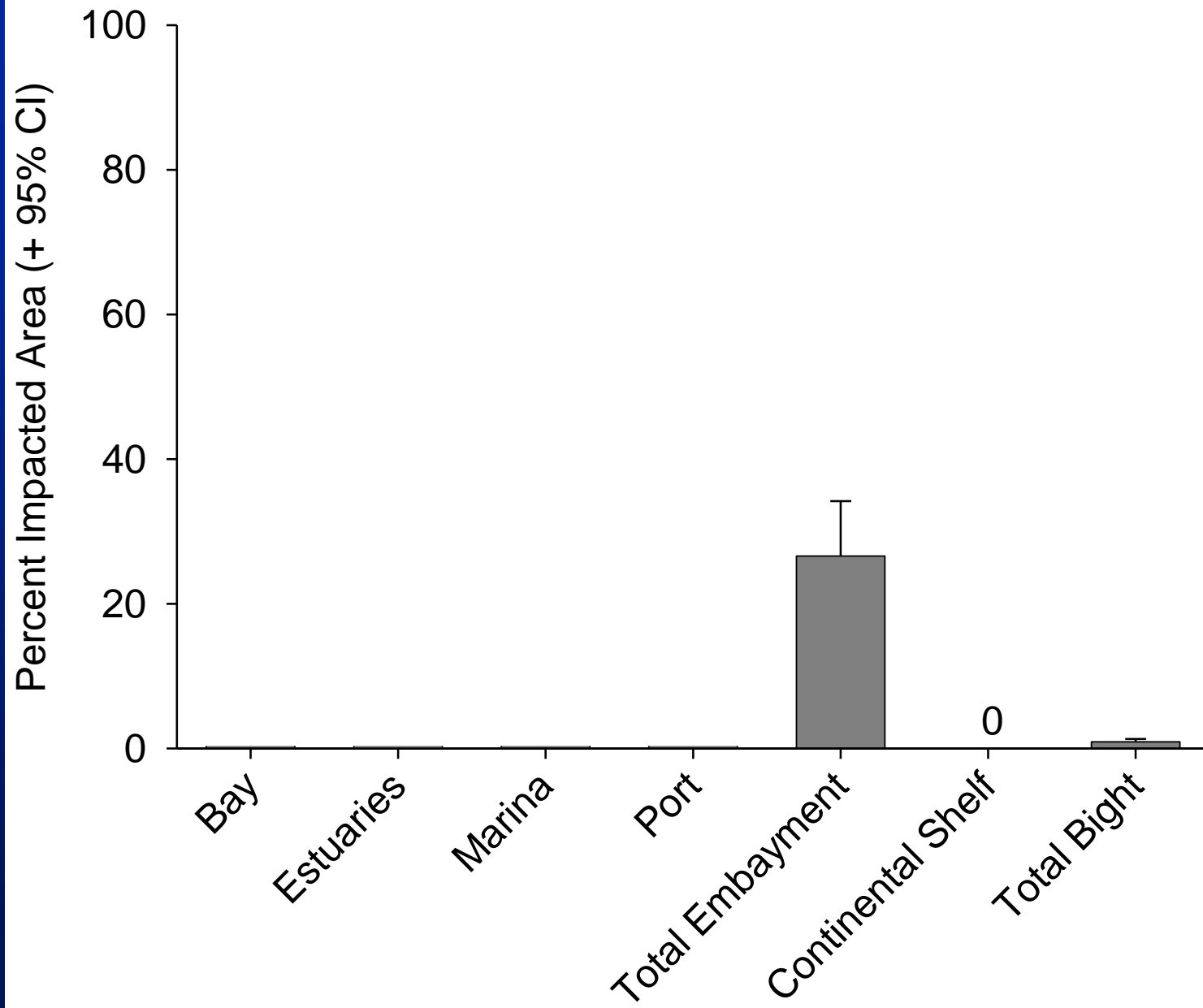


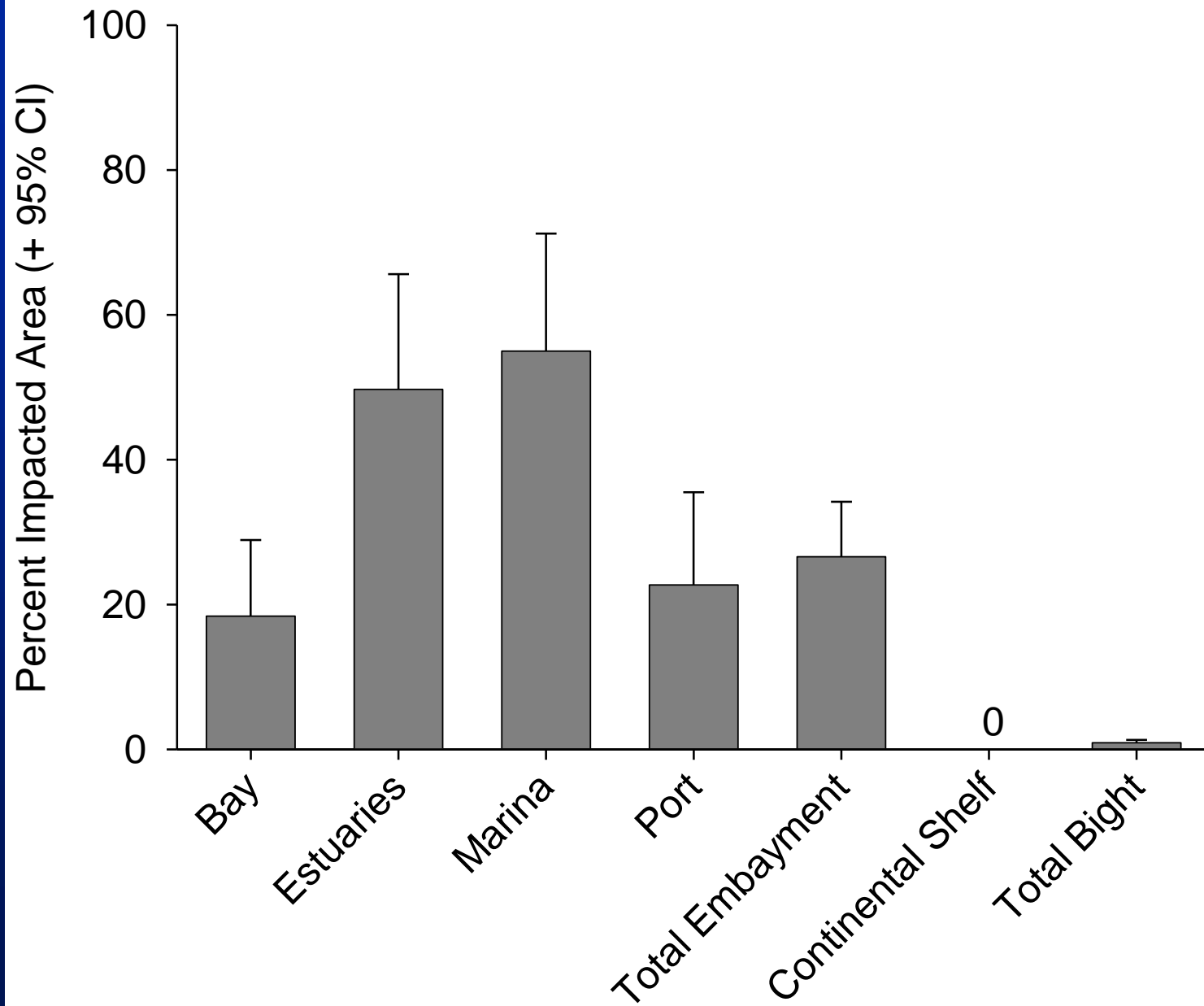


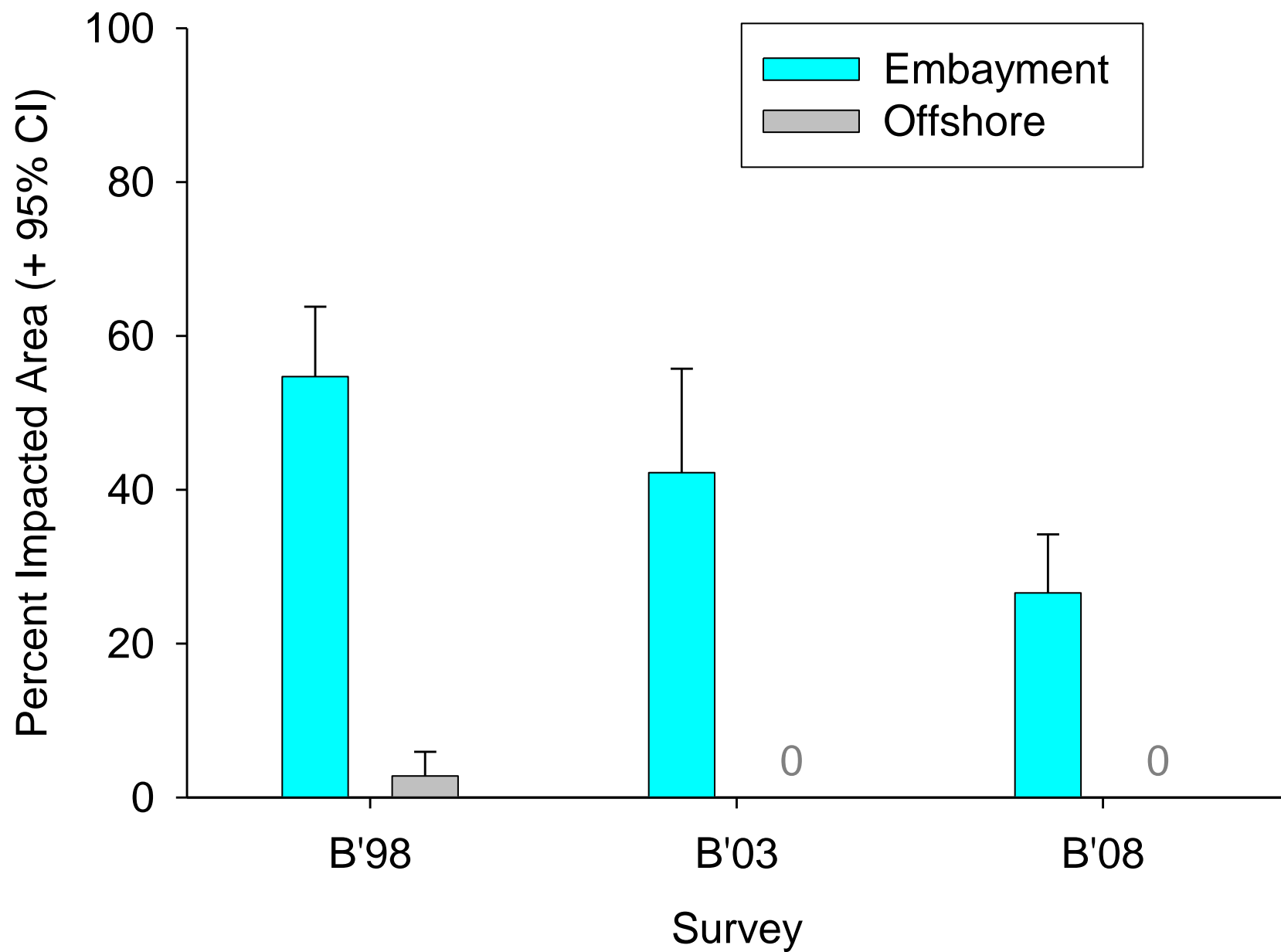
# Extent Of Sediment Contaminant Impacts in the Southern California Bight



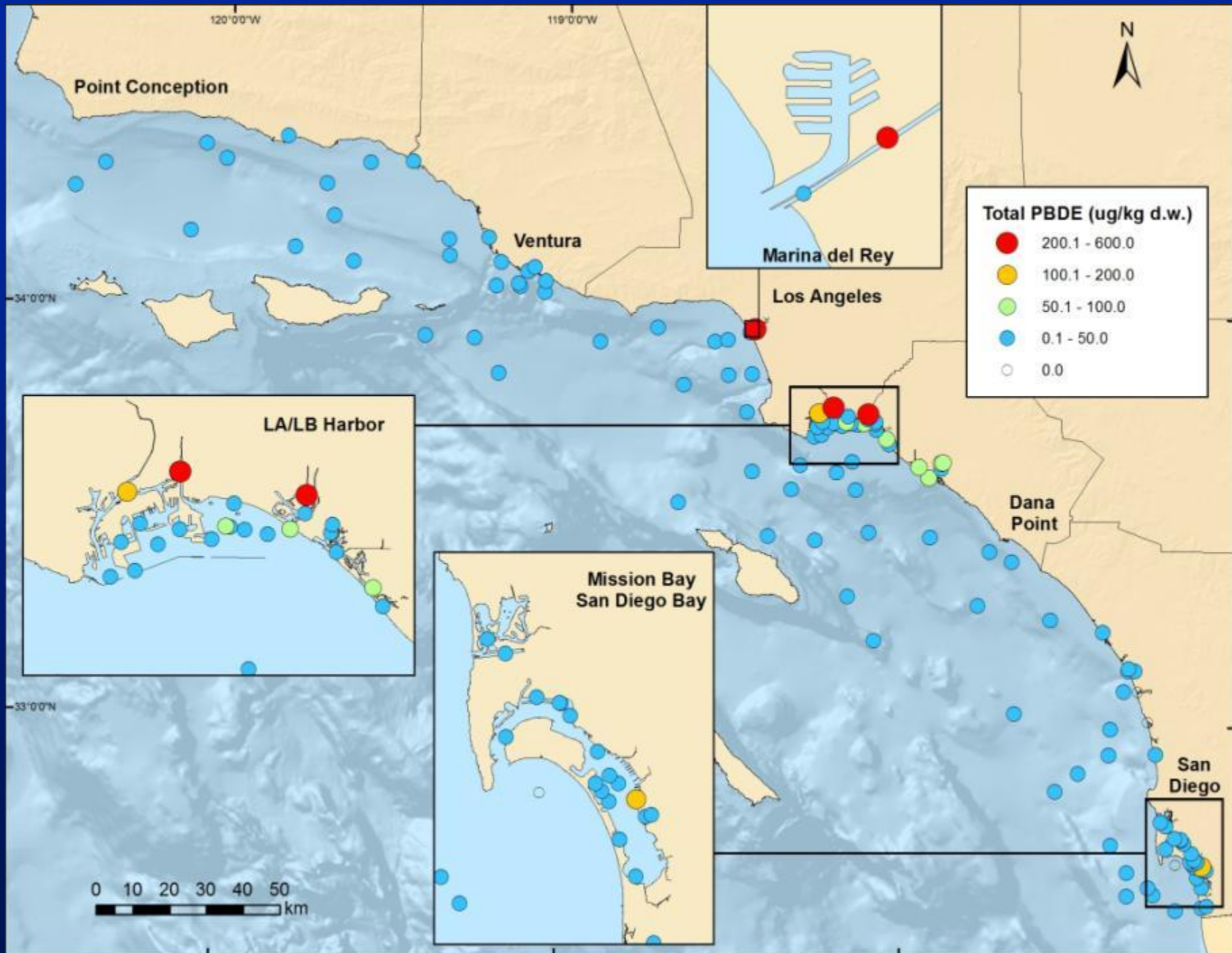








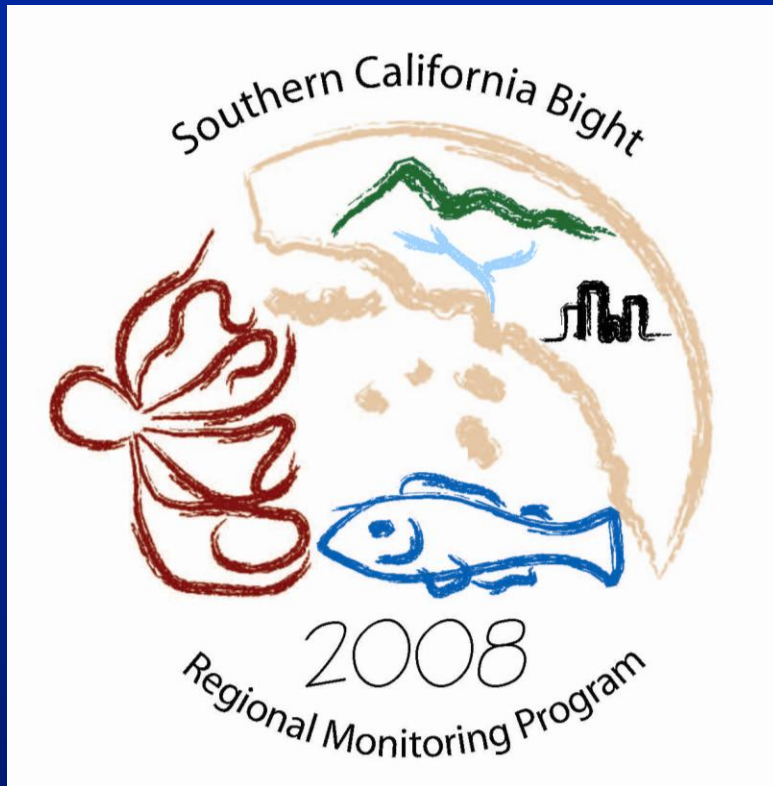
# Flame Retardants (PBDEs) In the Southern California Bight



# Take Away

---

- **The Bight Program is an effective mechanism for getting answers**
- **Bight '08 is wrapping up**
  - **Look for your favorite indicator online**
- **Bight '13 is coming**
  - **Planning meetings to start in early Fall 2012**



**Ken Schiff**

**[kens@sccwrp.org](mailto:kens@sccwrp.org)**

**(714) 755 - 3202**